

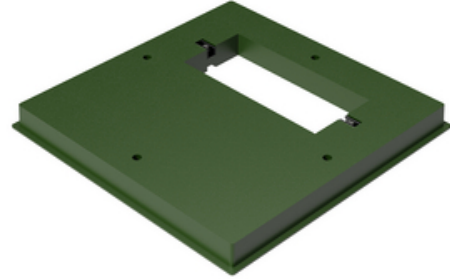
# HUBBELL

## Power Systems

### Equipment Flat Pad, 42"x42", HDPE Plastic

By Pencil  
Catalog # [TP4224](#)

Hubbell's equipment Flat Pads are designed to work with an array of pad-mounted distribution transformers, switchgear, communication enclosures, and metal-enclosed devices while featuring a variety of benefits



\*Representative Image

#### Features

- Functioning as a foundation
- Flat pads support equipment weight while being lightweight, non-conductive and remaining stable under freeze and thaw cycles.

#### General

Color	PenCell Green
Insulated?	No
Material	HDPE Plastic
UPC	662037202316

#### Dimensions

Dimensions	42 in x 42 in x 4 in
Height	4 in
Length	42 in
Weight	37 lb
Width	42 in

#### Product Assets

[Catalogs - Above Ground Enclosures - Pad Mounted Equipment Solutions](#)

[Sales Drawings - Pencil 42 X 42 X 4 Pad W/ 12 X 24 Throat \(TP-4220-1224\)](#)