

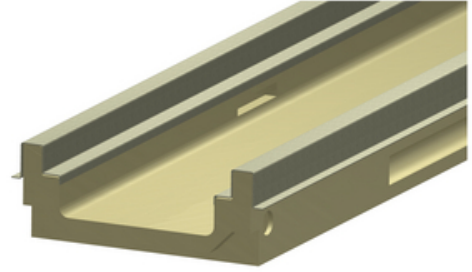
HUBBELL

Power Systems

POLYGUARD - Channel Stainless Steel Rail - 48" (pair)

By Polycast
Catalog # [DA0620B](#)

Made of high strength, chemical resistant, composite material, Polycast drains offer a high degree of chemical resistance and have a water absorption value of less than one percent (ASTM C140).



*Representative Image

Features

- Simple installation and lower cost
- Ideal for indoor and outdoor applications
- rapid drainage and durability
- resistant to freeze/thaw cycles
- Offers superior versatility with 24" and 48" components

General

Color	Gray
Material	Stainless Steel
Series	700 Series
Type	Channel Accessories/Polyguard

Dimensions

Length	48 in
Weight	2.5 lb

Product Assets

[Catalogs - Trench Drains](#)

[Video - Hubbell Power Systems Getting Real About Rust](#)