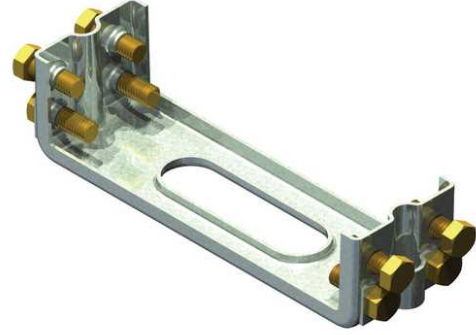


Installation Chair - 500/600/900 Series

By Polycast
Catalog # [DA0633](#)

Made of high strength, chemical resistant, composite material, Polycast drains offer a high degree of chemical resistance and have a water absorption value of less than one percent (ASTM C140).



*Representative Image

Features

- Simple installation and lower cost
- Ideal for indoor and outdoor applications
- rapid drainage and durability
- resistant to freeze/thaw cycles
- Offers superior versatility with 24" and 48" components

General

Color	Gray
Material	Zinc Plated Steel
Series	600 Series
Type	Channel Accessories/Installation Chair
UPC	662037208158

Dimensions

Dimensions	7 in x 2 in x 2 in
Height	2 in
Length	7 in
Weight	1 lb
Width	2 in

Product Assets

[Catalogs - Trench Drains \(PC-1\)](#)

[Video - Hubbell Power Systems Getting Real About Rust \(V107075E1018\)](#)