

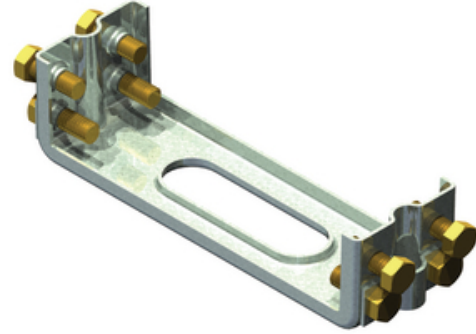
HUBBELL

Power Systems

400 Series - Installation Chair

By Polycast
Catalog # [DA0634](#)

The Polycast 400 Series is a complete surface drainage system with a precast polyester polymer concrete trench and a tight-fitting galvanized steel grate. The durable pedestrian traffic grate is also bicycle and wheel chair resistant. DIN Class A



*Representative Image

Features

- The steel grate is bicycle and wheelchair resistant and will support limited automotive traffic
- Inexpensive and long lasting
- Perfect drainage system for tennis courts, swimming pools, walkways, patios, garage entrances, etc.

General

Color	Gray
Material	Zinc Plated Steel
Series	400 Series
Type	Channel Accessories/Installation Chair

Dimensions

Dimensions	7 in x 2 in x 2 in
Height	2 in
Length	7 in
Weight	1 lb
Width	2 in

Product Assets

[Catalogs - Trench Drains](#)

[Video - Hubbell Power Systems Getting Real About Rust](#)