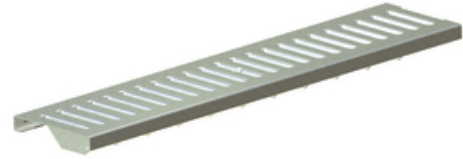


Class C - Cast Iron - slotted grate - 24"

By Polycast
Catalog # [DG0641](#)

Made of high strength, chemical resistant, composite material, Polycast drains offer a high degree of chemical resistance and have a water absorption value of less than one percent (ASTM C140).



*Representative Image

Features

- Simple installation and lower cost
- Ideal for indoor and outdoor applications
- rapid drainage and durability
- resistant to freeze/thaw cycles
- Offers superior versatility with 24" and 48" components

General

Color	Black
Load Rating (DIN)	56200 lb
Material	Cast Iron
Series	<ul style="list-style-type: none">• 600 Series• 500 Series
Type	Grates/600 Series & 500 Series

Dimensions

Length	24 in
Weight	15.75 lb
Width	5 in

Certifications and Compliance

DIN Designator	C
----------------	---

Product Assets

- [Catalogs - Trench Drains \(PC-1\)](#)
- [Sales Drawings - DG0641](#)
- [Video - Hubbell Power Systems Getting Real About Rust \(VI07075E1018\)](#)