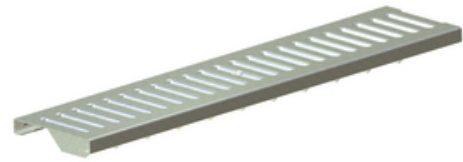




## Class C - Stainless - slotted grate - 48" reinforced

By Hubbell  
Catalog # [DG0647R](#)



\*Representative Image

Made of high strength, chemical resistant, composite material, Polycast drains offer a high degree of chemical resistance and have a water absorption value of less than one percent (ASTM C140).

### Features

- Simple installation and lower cost
- Ideal for indoor and outdoor applications
- rapid drainage and durability
- resistant to freeze/thaw cycles
- Offers superior versatility with 24" and 48" components

### General

Color	Gray
Load Rating (DIN)	56200 lb
Material	Stainless Steel
Series	<ul style="list-style-type: none"><li>• 600 Series</li><li>• 500 Series</li></ul>
Type	Grates/600 Series

### Dimensions

Length	48 in
Weight	12.6 lb
Width	5 in

### Certifications and Compliance

DIN Designator	C
----------------	---

### Product Assets

[Catalogs - Trench Drains \(PC-1\)](#)

[Video - Hubbell Power Systems Getting Real About Rust \(V107075E1018\)](#)



A proud member of the Hubbell Family.