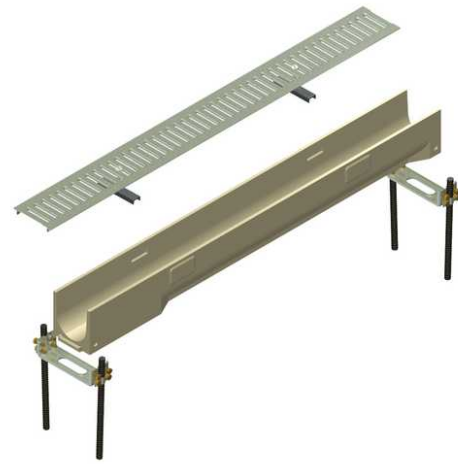




400 Series - 48" Residential Drain, Neutral Channel

By Hubbell
Catalog # [DP0405](#)

The Polycast 400 Series is a complete surface drainage system with a precast polyester polymer concrete trench and a tight-fitting galvanized steel grate. The durable pedestrian traffic grate is also bicycle and wheel chair resistant. DIN Class A



*Representative Image

Features

- The steel grate is bicycle and wheelchair resistant and will support limited automotive traffic
- Inexpensive and long lasting
- Perfect drainage system for tennis courts, swimming pools, walkways, patios, garage entrances, etc.

General

Color	Gray
Material	Polyester Polymer Concrete
Series	400 Series
Type	Channels/400 Series

Dimensions

Dimensions	48 in x 5 in x 5 in
Height	5 in
Length	48 in
Weight	27 lb
Width	5 in

Product Assets

[Catalogs - Trench Drains \(PC-1\)](#)

[Video - Hubbell Power Systems Getting Real About Rust \(V107075E1018\)](#)



A proud member of the Hubbell Family.

©2023 Hubbell Incorporated. All rights reserved.
POLY-DP0405-SPEC-EN | REV 9/2023