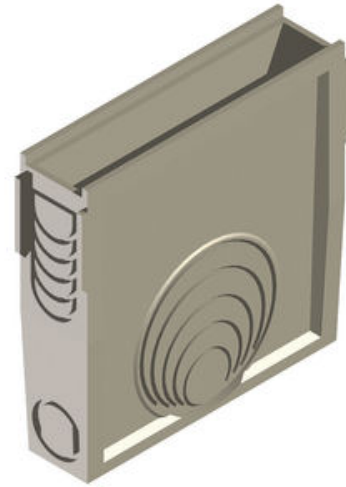


HUBBELL Power Systems

650 Series Catch Basin

By Polycast
Catalog # [DP0650](#)

The Polycast Catch Basins are an important part of the versatile Polycast Presloped drain system. The catch basins are manufactured with the same high strength, corrosion-resistant polyester and Vinyl Ester polymer concrete used for Polycast drain channels.



*Representative Image

Features

- Designed to be used at collection points, drain run transitions, and interceptors to collect solid debris.
- Designed to accommodate all drain channel sizes and to have cut-outs.
- Polycast catch basins have a selection of grates available for specific needs

General

Available Options	Available in Vinyl Ester for corrosive or high temperature applications
Color	Gray
Material	Polyester Polymer Concrete
Series	600 Series
Type	Catch Basins
UPC	662037208615

Dimensions

Dimensions	24 in x 6.25 in x 24 in
Height	24 in
Length	24 in
Weight	90 lb
Width	6.25 in

Product Assets

[Catalogs - Trench Drains](#)

[Video - Hubbell Power Systems Getting Real About Rust](#)