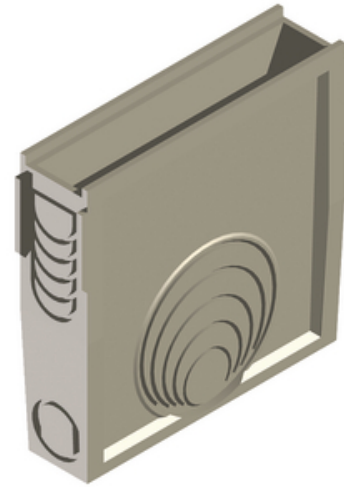




## 750 Series Catch Basin

By Hubbell  
Catalog # DP0750

The Polycast Catch Basins are an important part of the versatile Polycast Presloped drain system. The catch basins are manufactured with the same high strength, corrosion-resistant polyester and Vinyl Ester polymer concrete used for Polycast drain channels.



\*Representative Image

### Features

- Designed to be used at collection points, drain run transitions, and interceptors to collect solid debris.
- Designed to accommodate all drain channel sizes and to have cut-outs.
- Polycast catch basins have a selection of grates available for specific needs

### General

Available Options	Available in Vinyl Ester for corrosive or high temperature applications
Color	Gray
Material	Polyester Polymer Concrete
Series	700 Series
Type	Catch Basins

### Dimensions

Dimensions	24 in x 6.25 in x 24 in
Height	24 in
Length	24 in
Weight	105 lb
Width	6.25 in

### Product Assets

[Catalogs - Trench Drains \(PC-1\)](#)

[Video - Hubbell Power Systems Getting Real About Rust \(VIO7075E1018\)](#)



A proud member of the Hubbell Family.