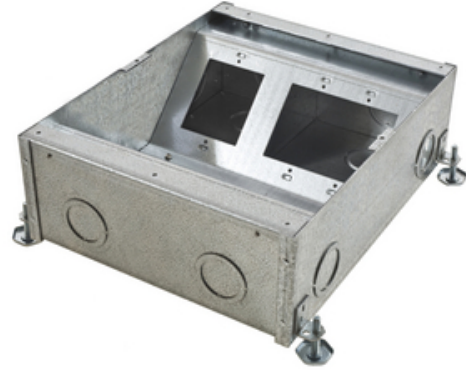




7-Gang CFB Series Box for Rectangular Covers, 6.08" Minimum Depth of Pour

By Hubbell Premise Wiring
Catalog # [CFB7G6](#)



Concrete Floorboxes, Galvanized Stamped Steel Box, Recessed, 7-Gang CFB Series Box for Rectangular Covers, 6.08" Minimum Depth of Pour

Features

- Recessed 7-Gang Round Cover Floorbox
- For Use In Concrete Floors
- 6.08" Minimum Depth of Pour
- Box Includes Installation Cover
- Accepts industryStandard Size Wallplates

Application

For Use in Concrete Floors

General

Application - For Use On	Concrete
Color	<ul style="list-style-type: none"> • Metallic • Métallique
Construction	Fabricated
EU RoHS Indicator	No
Knockouts	4) 1" - 1 1/4", 7) 1" - 1 1/2", 1) 2"
Material	Pre Galvanized Steel
Mounting Method	Cast Into Concrete
Number of Gang(s)	7-Gang
Series	Recessed Rectangular - CFB Series
Size	7-Gang
Type	<ul style="list-style-type: none"> • 7-Gang Recessed Floor Box • 7-Gang Recessed Floor Box
UPC	783585315898

Dimensions

Dimensions	10 in x 12.16 in x 6.08 in
Height	6.08 in
Length	10 in
Width	12.16 in

Conductor Related

Cable Entry Through Cover

Certifications and Compliance

Industry Standard(s)	<ul style="list-style-type: none"> • UL/CSA • UL514
----------------------	---

Product Assets

[Catalog Page - PREM R18 Catalog Page](#)
[Catalogs - HPW CATALOG_2023_FULL](#)

Related Products

[CFB7CVRALU - CFB7G Rectangular Series Box, Surface Cover Assembly, 1/4" Aluminum Beveled Edging for Carpet](#)
[CFB7TBRS - CFB7G Rectangular Series Box, Surface Cover Assembly, 1/2" Brass Square Edging for Tile](#)
[CFB7CVRBLK - CFB7G Rectangular Series Box, Surface Cover Assembly, 1/4" Black Beveled Edging for Carpet](#)
[CFBOGPAN4 - On-grade Barrier, 15.75" Square, 4.00" Deep](#)
[CFB7TALU - CFB7G Rectangular Series Box, Surface Cover Assembly, 1/2" Aluminum Square Edging for Tile](#)



A proud member of the Hubbell Family.

©2023 Hubbell Incorporated. All rights reserved.
PREM-CFB7G6-SPEC-EN | REV 7/2023