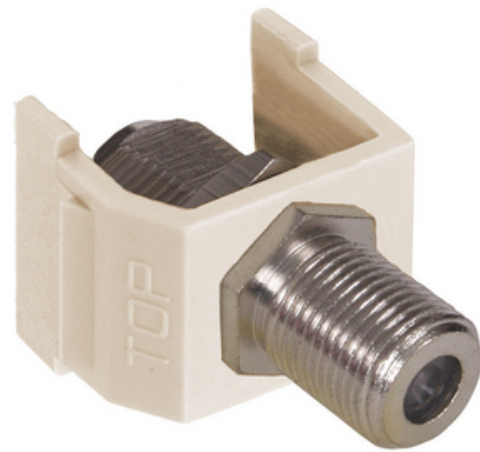




Net Select, Snap-Fit, With F Connector, Light Almond

By Hubbell Premise Wiring
Catalog # [NSF70LA](#)



Net Select, Snap-Fit, With F Connector, Light Almond

Features

- Universal keystone design
- Seamless Hubbell system integration
- Quick and easy screw-style installation

Application

CATV

General

Contact	Phosphor Bronze
EU RoHS Indicator	Yes
Environmental Conditions	Indoor Dry Unless Protected By Additional Means
Item Type	1) Nickel F-Coax Connector
Material - Mounting Hardware	Screw Mounting
OEM Brand Name	Hubbell Premise Wiring
Style	Coupler
Temperature Rating	Max Continuous- 75 Degrees C, Minimum- -40 Without Impact
Type	F-Type
UPC	883778503320

Dimensions

Display Size Standard Sized Product

Electrical Ratings

Connectivity	Female to Female
Contact Resistance	Per TIA
Insertion Loss	Per TIA

Logistics

Carton Quantity 25

Product Assets

[Catalog Page - PREM V10 Catalog Page](#)
[Catalogs - HPW CATALOG_2023_FULL](#)
[Sales Drawings - HPW_NSF70_DRAWING_PDF](#)



A proud member of the Hubbell Family.

©2023 Hubbell Incorporated. All rights reserved.
PREM-NSF70LA-SPEC-EN | REV 7/2023