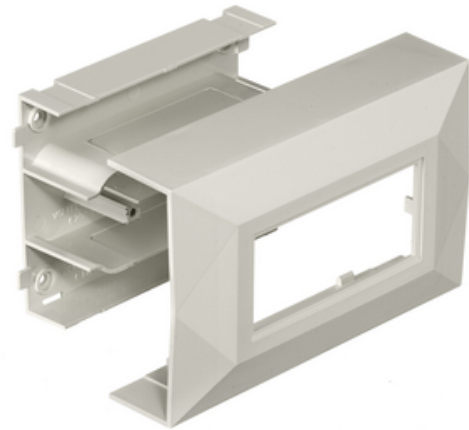




Non-Metallic Raceway, BaseTrak Series, 1- Gang Inline Device Box

By Hubbell Premise Wiring
Catalog # [PB3IND](#)

Non-Metallic Raceway, BaseTrak Series, 1-Gang Inline Device Box



Features

- Reduces inventory requirements
- Eliminates need to order three separate boxes
- Boxes available in low, standard and deep profiles

General

Color	<ul style="list-style-type: none">• Office White
EU RoHS Indicator	Contact Manufacturer
Item Type	PB3 BaseTrak Series
Number of Gang(s)	1-Gang
Performance	<ul style="list-style-type: none">• Environmental - Flame Rating - UL94V-0• Environmental - Temperature Range - -25.6° to 158° F
Series	PB3
Style	In-Line
Type	Boxes
UPC	783585090863

Certifications And Compliance

Industry Standard(s)	<ul style="list-style-type: none">• CSA Standard C22.2 no. 62• E118895 / E119190• UL Standard UL 5A
----------------------	---

Standards - RoHS Compliance CM Status

Logistics

Carton Quantity	10
Pallet Quantity	320

Product Assets

[Catalog Page - PREM U61 CatalogPage](#)
[Catalog Page - WDK S-60 Catalog Page](#)
[Catalogs - Premise Wiring Catalog](#)
[Catalogs - WDK Catalog Full 2024](#)



A proud member of the Hubbell Family.