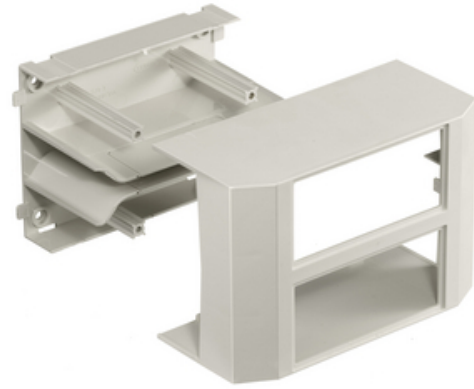




Non-Metallic Raceway, BaseTrak Series, 2- Gang Inline Device Box

By Hubbell Premise Wiring
Catalog # [PB3IND2G](#)



Non-Metallic Raceway, BaseTrak Series, 2-Gang Inline Device Box

Features

- Reduces inventory requirements
- Eliminates need to order three separate boxes
- Boxes available in low, standard and deep profiles

General

Color	<ul style="list-style-type: none">• Office White• Blanc cassé
EU RoHS Indicator	Contact Manufacturer
Item Type	PB3 BaseTrak Series
Number of Gang(s)	2-Gang
Performance	<ul style="list-style-type: none">• Environmental - Flame Rating - UL94V-0• Environmental - Temperature Range - -25.6° to 158° F
Series	PB3
Style	In-Line
Type	<ul style="list-style-type: none">• Boxes• Boxes
UPC	783585090870

Certifications and Compliance

Industry Standard(s)	<ul style="list-style-type: none">• CSA Standard C22.2 no. 62• E118895 / E119190• UL Standard UL 5A
----------------------	---

Logistics

Carton Quantity	10
-----------------	----

Product Assets

[Catalog Page - PREM S61 Catalog Page](#)
[Catalogs - HPW CATALOG_2023_FULL](#)



A proud member of the Hubbell Family.

©2023 Hubbell Incorporated. All rights reserved.
PREM-PB3IND2G-SPEC-EN | REV 7/2023