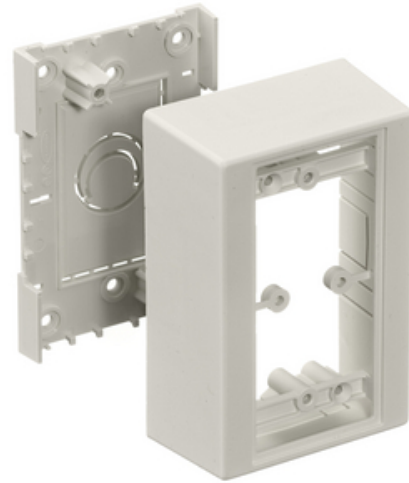




Non-Metallic Raceway, PolyTrak Series, PolyTrak Box, 1-Gang, 1.78" Depth Standard

By Hubbell Premise Wiring
Catalog # [PDB12S](#)

Non-Metallic Raceway, PolyTrak Series, PolyTrak Box, 1-Gang, 1.78" Depth Standard



Features

- Reduces inventory requirements
- Eliminates need to order three separate boxes
- Boxes available in low, standard and deep profiles

General

Color	<ul style="list-style-type: none">• Office White• Blanc cassé
EU RoHS Indicator	Contact Manufacturer
Item Type	PW2 WallTrak, PL1 LANTrak and PP1 PremiseTrak (Latching) Series
Number of Gang(s)	1-Gang
Performance	<ul style="list-style-type: none">• Environmental - Flame Rating - UL94V-0• Environmental - Temperature Range - -25.6° to 158° F
Series	<ul style="list-style-type: none">• PP1• PL1• PW2
Style Type	Standard <ul style="list-style-type: none">• Boxes• Boxes
UPC	783585090405

Certifications and Compliance

Industry Standard(s)	<ul style="list-style-type: none">• CSA Standard C22.2 no. 62• E118895 / E119190• UL Standard UL 5A
----------------------	---

Logistics

Carton Quantity	5
-----------------	---

Product Assets

[Catalog Page - PREM S56 Catalog Page](#)
[Catalog Page - PREM S63 Catalog Page](#)
[Catalog Page - PREM S57 Catalog Page](#)
[Catalog Page - PREM S59 Catalog Page](#)
[Catalogs - HPW CATALOG_2023_FULL](#)



A proud member of the Hubbell Family.

©2023 Hubbell Incorporated. All rights reserved.
PREM-PDB12S-SPEC-EN | REV 7/2023