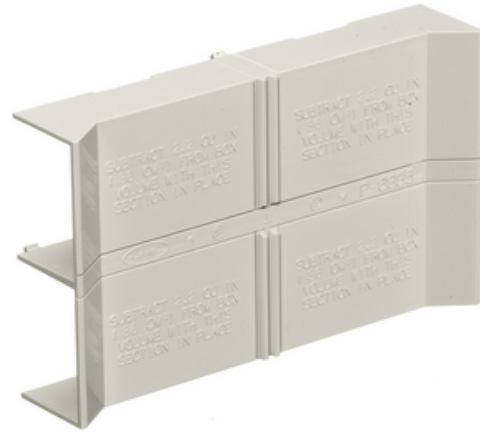




## Non-Metallic Raceway, PolyTrak Series, PolyTrak Box, 2-Gang, Deep

By Hubbell Premise Wiring  
Catalog # [PDB2DIV](#)

Non-Metallic Raceway, PolyTrak Series, PolyTrak Box, Double, Deep



### Features

- Reduces inventory requirements
- Eliminates need to order three separate boxes
- Boxes available in low, standard and deep profiles

### General

Color	<ul style="list-style-type: none"><li>• Office White</li><li>• Blanc cassé</li></ul>
EU RoHS Indicator	Contact Manufacturer
Item Type	PW2 WallTrak (Latching) Series
Number of Gang(s)	2-Gang
Performance	<ul style="list-style-type: none"><li>• Environmental - Flame Rating - UL94V-0</li><li>• Environmental - Temperature Range - -25.6° to 158° F</li></ul>
Series	PW2
Style	Divider/Pass Thru
Type	<ul style="list-style-type: none"><li>• Boxes</li><li>• Boxes</li></ul>
UPC	783585091303

### Certifications and Compliance

Industry Standard(s)	<ul style="list-style-type: none"><li>• CSA Standard C22.2 no. 62</li><li>• E118895 / E119190</li><li>• UL Standard UL 5A</li></ul>
----------------------	---

### Logistics

Carton Quantity	10
-----------------	----

### Product Assets

[Catalog Page - PREM S59 Catalog Page](#)  
[Catalogs - HPW CATALOG\\_2023\\_FULL](#)



A proud member of the Hubbell Family.

©2023 Hubbell Incorporated. All rights reserved.  
PREM-PDB2DIV-SPEC-EN | REV 7/2023