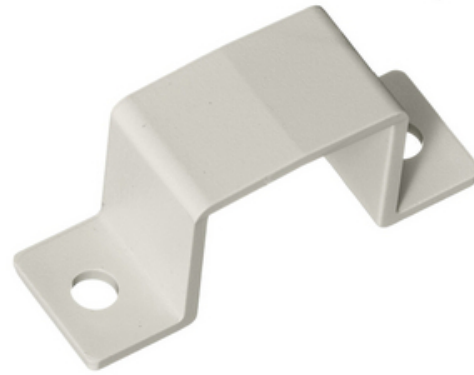




Non-Metallic Raceway, Latching PremiseTrak, Security Strap

By Hubbell Premise Wiring
Catalog # [PPISS](#)



Non-Metallic Raceway, Latching PremiseTrak, Security Strap

Features

- For preventing potential tampering with PPI PremiseTrak cover
- Can also be used as a splice cover

General

| | |
|-------------------|---|
| Color | Office White |
| EU RoHS Indicator | Contact Manufacturer |
| Item Type | PP1 PremiseTrak (Latching) Series |
| Material | Non-Metallic |
| Performance | <ul style="list-style-type: none">• Environmental - Flame Rating - UL94V-0• Environmental - Temperature Range - -25.6° to 158° F |
| Series | PP1 |
| Style | Strap |
| Type | Miscellaneous Fittings |
| UPC | 783585090566 |

Certifications and Compliance

| | |
|----------------------|---|
| Industry Standard(s) | <ul style="list-style-type: none">• CSA Standard C22.2 no. 62• E118895 / E119190• UL Standard UL 5A |
|----------------------|---|

Logistics

| | |
|-----------------|---|
| Carton Quantity | 5 |
|-----------------|---|

Product Assets

[Catalog Page - PREM S56 Catalog Page](#)
[Catalogs - HPW CATALOG_2023_FULL](#)



A proud member of the Hubbell Family.

©2023 Hubbell Incorporated. All rights reserved.
PREM-PP1SS-SPEC-EN | REV 7/2023