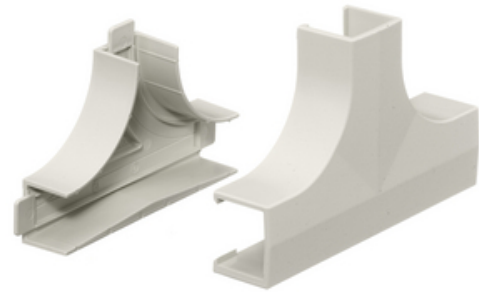




Non-Metallic Raceway, Latching PremiseTrak, Base and Cover, Tee Fitting

By Hubbell Premise Wiring
Catalog # [PP1TCBC](#)



Non-Metallic Raceway, Latching PremiseTrak, Base and Cover,
Tee Fitting

Features

- Full capacity 1¼ in. bend radius tee

General

Color	Office White
EU RoHS Indicator	Contact Manufacturer
Item Type	PP1 PremiseTrak (Latching) Series
Material	Non-Metallic
Performance	<ul style="list-style-type: none">• Environmental - Flame Rating - UL94V-0• Environmental - Temperature Range - -25.6° to 158° F
Series	PP1
Style	Base and Cover
Type	Tees
UPC	783585090580

Certifications and Compliance

Industry Standard(s)	<ul style="list-style-type: none">• CSA Standard C22.2 no. 62• E118895 / E119190• UL Standard UL 5A
----------------------	---

Logistics

Carton Quantity	10
-----------------	----

Product Assets

[Catalog Page - PREM S56 Catalog Page](#)
[Catalogs - HPW CATALOG_2023_FULL](#)



A proud member of the Hubbell Family.

©2023 Hubbell Incorporated. All rights reserved.
PREM-PP1TCBC-SPEC-EN | REV 7/2023