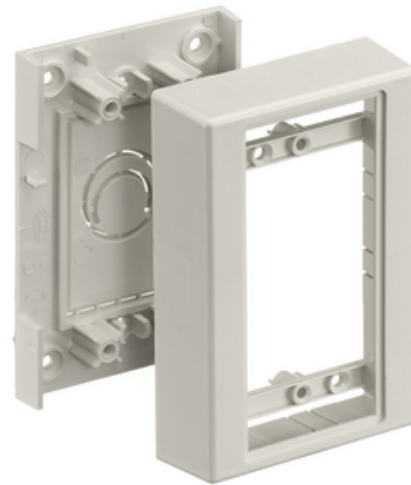




Non-Metallic Raceway, PolyTrak Series, PREMISE-TRAK, PLUGTRAK, Low Profile Box

By Hubbell Premise Wiring
Catalog # [PT12LPB](#)

Non-Metallic Raceway, PolyTrak Series, PREMISE-TRAK, PLUGTRAK, Low Profile Box



Features

- Reduces inventory requirements
- Eliminates need to order three separate boxes
- Boxes available in low, standard and deep profiles

General

Color	<ul style="list-style-type: none">• Office White• Blanc cassé
EU RoHS Indicator	Contact Manufacturer
Item Type	PT1 PremiseTrak Series
Number of Gang(s)	1-Gang
Performance	<ul style="list-style-type: none">• Environmental - Flammability - UL94V-0• Environmental - Operating Temperature - -25.6° to 158° F
Series	PT1
Style	Low Profile
Type	<ul style="list-style-type: none">• Boxes• Boxes
UPC	783585337913

Certifications and Compliance

Industry Standard(s)	<ul style="list-style-type: none">• CSA Standard C22.2 no. 62• E118895 / E119190• UL Standard UL 5A
----------------------	---

Logistics

Carton Quantity	5
-----------------	---

Product Assets

[Catalog Page - PREM S55 Catalog Page](#)
[Catalogs - HPW CATALOG_2023_FULL](#)



A proud member of the Hubbell Family.

©2023 Hubbell Incorporated. All rights reserved.
PREM-PT12LPB-SPEC-EN | REV 7/2023