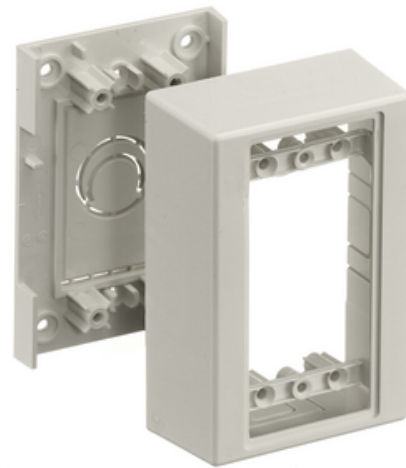




# Non-Metallic Raceway, PolyTrak Series, PREMISE-TRAK, PLUGTRAK, Standard Box

By Hubbell Premise Wiring  
Catalog # [PT12SBA](#)



Non-Metallic Raceway, PolyTrak Series, PREMISE-TRAK, PLUGTRAK, Standard Box

## Features

- Reduces inventory requirements
- Eliminates need to order three separate boxes
- Boxes available in low, standard and deep profiles

## General

Color	<ul style="list-style-type: none"> <li>• Office White</li> <li>• Blanc cassé</li> </ul>
EU RoHS Indicator	Contact Manufacturer
Item Type	PT1 PremiseTrak Series
Number of Gang(s)	1-Gang
Performance	<ul style="list-style-type: none"> <li>• Environmental - Flammability - UL94V-0</li> <li>• Environmental - Operating Temperature - -25.6° to 158° F</li> </ul>
Series	PT1
Style	Standard
Type	<ul style="list-style-type: none"> <li>• Boxes</li> <li>• Boxes</li> </ul>
UPC	783585337890

## Certifications and Compliance

Industry Standard(s)	<ul style="list-style-type: none"> <li>• CSA Standard C22.2 no. 62</li> <li>• E118895 / E119190</li> <li>• UL Standard UL 5A</li> </ul>
----------------------	---

## Logistics

Carton Quantity	5
-----------------	---

## Product Assets

[Catalog Page - PREM S55 Catalog Page](#)  
[Catalogs - HPW CATALOG\\_2023\\_FULL](#)



A proud member of the Hubbell Family.