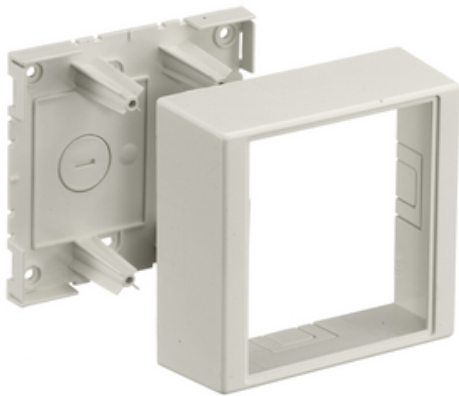




# Non-Metallic Raceway, PolyTrak Series, PREMISE-TRAK, PLUGTRAK, 2-Gang Box

By Hubbell Premise Wiring  
Catalog # [PT12TGB](#)



Non-Metallic Raceway, PolyTrak Series, PREMISE-TRAK, PLUGTRAK, 2-Gang Box

## General

Color	<ul style="list-style-type: none"><li>Office White</li></ul>
EU RoHS Indicator	Contact Manufacturer
Item Type	PT1 PremiseTrak Series
Number of Gang(s)	2-Gang
Performance	<ul style="list-style-type: none"><li>Environmental - Flammability - UL94V-0</li><li>Environmental - Operating Temperature - -25.6° to 158° F</li></ul>
Series	PT1
Style	Deep
Type	Boxes
UPC	783585337852

## Certifications And Compliance

Industry Standard(s)	<ul style="list-style-type: none"><li>CSA Standard C22.2 no. 62</li><li>E118895 / E119190</li><li>UL Standard UL 5A</li></ul>
----------------------	---

## Logistics

Carton Quantity	5
Pallet Quantity	945

## Product Assets

[Catalog Page - PREM U55 CatalogPage](#)  
[Catalog Page - WDK S-54 Catalog Page](#)  
[Catalogs - Premise Wiring Catalog](#)  
[Catalogs - WDK Catalog Full 2024](#)



A proud member of the Hubbell Family.