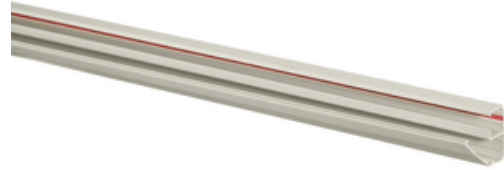




Non-Metallic Raceway, Latching WallTrak, WallTRAK2, Base and Cover, 7' Length

By Hubbell Premise Wiring
Catalog # [PW2BC7](#)



Non-Metallic Raceway, Latching WallTrak, WallTRAK2, Base and Cover, 7'

Features

- UL Listed and CSA Certified to 600 volts
- Single and two channel latching raceways are dual-rated for both power and data applications, reducing inventory requirements

Application

7' Base and Cover

General

| | |
|-------------------|---|
| Color | <ul style="list-style-type: none">• Office White• Blanc cassé |
| Construction | Extruded Plastic |
| Cover Type | Removable |
| EU RoHS Indicator | Yes |
| Enclosure Type | NEMA 1 Rating |
| Item Type | PW2, 2-Channel WallTrak-Latching |
| Knockouts | None |
| Material | Thermoplastic |
| Performance | <ul style="list-style-type: none">• Environmental - Flame Rating - UL94V-0• Environmental - Temperature Range - -25.6° to 158° F |
| Series | PW2 |
| Style | Two Channel, Latching |
| Type | <ul style="list-style-type: none">• Base and Cover• Base and Cover |
| UPC | 783585090627 |

Dimensions

| | |
|--------|---------|
| Length | 7 ft |
| Width | 2.12 in |

Certifications and Compliance

| | |
|------------------------|---|
| Industry Standard(s) | <ul style="list-style-type: none">• CSA Standard C22.2 no. 62• E118895 / E119190• UL Standard UL 5A |
| Non Hazardous Location | Non Hazardous |

Logistics

| | |
|-----------------|----|
| Carton Quantity | 70 |
|-----------------|----|

Product Assets

[Catalog Page - PREM S59 Catalog Page](#)
[Catalogs - HPW CATALOG_2023_FULL](#)



A proud member of the Hubbell Family.

©2023 Hubbell Incorporated. All rights reserved.
PREM-PW2BC7-SPEC-EN | REV 7/2023