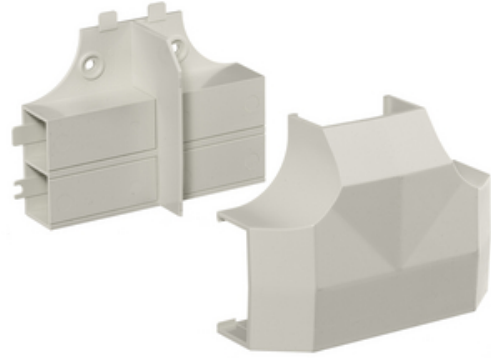




Non-Metallic Raceway, Latching WallTrak, WALLTRAK2, Base and Cover, Tee Fitting

By Hubbell Premise Wiring
Catalog # [PW2TCBC](#)



Non-Metallic Raceway, Latching WallTrak, WALLTRAK2, Base and Cover, Tee Fitting

Features

- Full capacity 1¼ in. bend radius external elbow

Application

Tee Fitting Base and Cover

General

Color	Office White
Construction	Extruded
EU RoHS Indicator	Yes
Item Type	PW2 WallTrak (Latching) Series
Knockouts	None
Material	Non-Metallic
Performance	<ul style="list-style-type: none">• Environmental - Flame Rating - UL94V-0• Environmental - Temperature Range - -25.6° to 158° F
Series	PW2
Style	Base and Cover
Type	Tees
UPC	783585090740

Dimensions

Width 4.2 in

Certifications and Compliance

Industry Standard(s)

- CSA Standard C22.2 no. 62
- E118895 / E119190
- UL Standard UL 5A

Non Hazardous Location Non-Hazardous

Logistics

Carton Quantity 5

Product Assets

[Catalog Page - PREM S59 Catalog Page](#)
[Catalogs - HPW CATALOG_2023_FULL](#)



A proud member of the Hubbell Family.

©2023 Hubbell Incorporated. All rights reserved.
PREM-PW2TCBC-SPEC-EN | REV 7/2023