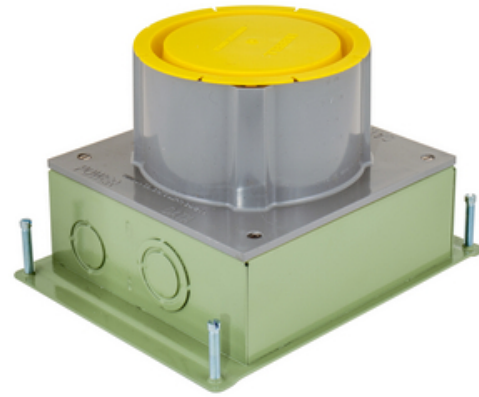




# SystemOne, Round Flush Floorboxes, Galvanized Stamped Steel, 3.50" Minimum Dept of Pour, Corrosion Resistant Paint

By Hubbell Premise Wiring  
Catalog # [S1SFBCR](#)



In-Floor Delivery Systems, SystemOne, Round Flush Floorboxes, Galvanized Stamped Steel, 3.50" Minimum Dept of Pour, Corrosion Resistant Paint

## Features

- Corrosion-Resistant Galvanized Stamped Steel Flush Round Floorbox
- For Use In Concrete Floors
- 3.50" Minimum Depth of Pour
- Box Includes Installation Cover

## Application

For Use in Concrete Floors

## General

Application - For Use On	Concrete
Construction	Fabricated
Cover Shape	Round
EU RoHS Indicator	Contact Manufacturer
Material	Composite
Mounting Method	Cast Into Concrete
Series	Flush - S1 Series
Type	Steel Box with Epoxy Paint
UPC	783585546117

## Dimensions

Dimensions	7.5 in x 9.54 in x 3 in
Height	3 in
Length	7.5 in
Width	9.54 in

## Conductor Related

Cable Entry	Through Top
-------------	-------------

## Certifications and Compliance

Industry Standard(s)	<ul style="list-style-type: none"><li>• cULus</li><li>• UL514</li></ul>
----------------------	---

## Product Assets



A proud member of the Hubbell Family.

©2023 Hubbell Incorporated. All rights reserved.  
PREM-S1SFBCR-SPEC-EN | REV 7/2023