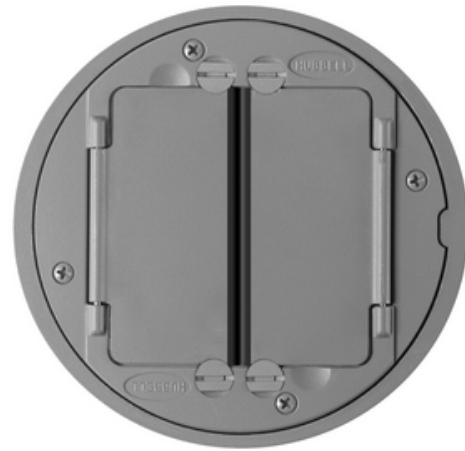




SystemOne Universal Cover Tile Flange Assembly, Gray Powder Paint Finish

By Hubbell Premise Wiring
Catalog # [SITFCGY](#)

In-Floor Delivery Systems, SystemOne Universal Cover Tile
Flange Assembly, Gray Powder Paint Finish



Features

- Durable Powder Coat Finish
- Cast Aluminum Construction
- Dual Hinged Doors Open 180 Degrees
- ADA Compliant
- Scrubwater Compliant

Application

Flush SystemOne Installation

General

Application - For Use On Color	Tile <ul style="list-style-type: none">• Gray• Gris
Construction	Cast Aluminum
Cover Shape	Round
EU RoHS Indicator	No
Finish Type	Gray
Item Type	Flush Cover/Tile Flange
Material	Composite
Material - Mounting Hardware	Mounting Hardware Included
Mounting Method	To Fitting in Floor
Mounting Type	(3) Screw Mount
Number Of Outlets	No Devices
Style	Cover Flanges
Type	<ul style="list-style-type: none">• Flush SystemOne Universal Covers• Flush SystemOne Universal Covers
Type of Use	Tile, Flush
Typical Application	Tile, Flush
UPC	783585371122

Dimensions

Width 5.62 in

Certifications and Compliance

Industry Standard(s) cULus

Logistics

Carton Quantity 5

Product Assets

[Catalog Page - PREM R16 Catalog Page](#)
[Catalog Page - PREM R45 Catalog Page](#)
[Catalogs - HPW CATALOG_2023_FULL](#)

Related Products

[S1SPAMM20 - SystemOne, Sub-Plate, \(2\) Hubbell Flush Keystone Openings and \(1\) StyleLine Decorator Data Opening, Single 20A, 125V Receptacle, Black](#)
[S1SPTRACC - SystemOne, Sub-Plate, Recessed Bezel for \(6\) Ortronics TracJack Modules, Controlled Single 20A, 125V Receptacle, Black](#)
[S1SPEXT2C - SystemOne, Sub-Plate, Recessed Opening \(1\) Extron Single MAAP or \(2\) Single AAP Series Adapter Plates or FSR IPS plates, Controlled Single 20A, 125V](#)
[S1SP - SystemOne, Sub-Plate, Dual StyleLine Decorator Openings, Black](#)
[S1SP4X4 - SystemOne, Sub-Plate, \(4\) 20A, 125V Receptacles, \(4\) Hubbell Keystone Openings, Black](#)



A proud member of the Hubbell Family.

©2023 Hubbell Incorporated. All rights reserved.
PREM-SITFCGY-SPEC-EN | REV 7/2023