

Fiber Optic Connectors, Snap-Fit,
MT- RJ, Phosphor Bronze Sleeves,
Light Almond Housing

By Hubbell Premise Wiring
Catalog # [SFMTRJLA](#)

Fiber Optic Connectors, Snap-Fit, MT- RJ, Phosphor Bronze
Sleeves, Light Almond Housing

Features

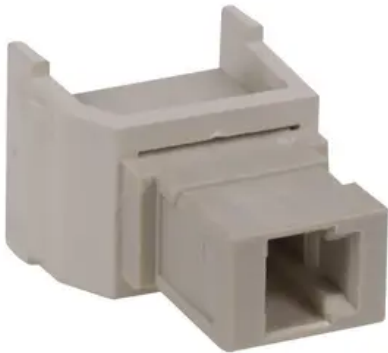
- Snap Fit
- Lt Almond Housing
- Standard
- MT-RJ
- Lt Almond Adapter

Application

Data Outlet

General

Catalog Number	SFMTRJLA
Color	Lt Almond
Color - Housing	Lt Almond
EU RoHS Indicator	Yes
Enclosure Type	Various
Environmental Conditions	Indoor
Item Type	MTRJ
Material	Bronze, Phosphor
Material - Mounting Hardware	Snap-In, Keystone
Mounting Type	Standard
OEM Brand Name	Hubbell Premise Wiring
Repeatability	0.1 dB
Service Life	500 matings
Size	.58" X .76"
Style	MT-RJ



Sub Brand	OptiChannel
Temperature Rating	0C to 70C
UPC	662620104560

Dimensions

Display Size	.58" X .76"
--------------	-------------

Electrical Ratings

Connectivity	Receptacle
Insertion Loss	0.75 dB
Return Loss	26

Conductor Related

Fiber Size	125 Micron
------------	------------

Certifications And Compliance

Industry Standard(s)	Telcordia GR-326-CORE;TIA-568-C.3;TIA-604 FOCIS-12
----------------------	--

Logistics

Carton Quantity	25
-----------------	----

Product Assets

[Sales Drawings - SFMTRJ - PDF](#)
[Specifications - SFMTRJLA](#)