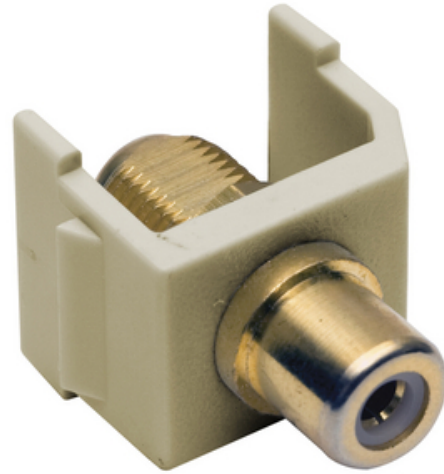




Connector, Snap-Fit, RCA to F-Coupler, Electric Ivory

By Hubbell Premise Wiring
Catalog # [SFRFGEI](#)

Connector, Snap-Fit, RCA to F-Coupler, Electric Ivory



Application

Snap-Fit RCA to F-Connector

General

Contact	Beryllium Copper
EU RoHS Indicator	Yes
Environmental Conditions	Indoor Dry Unless Protected By Additional Means
Item Type	iSTATION RCA and F-Keystone Connectors
Material - Mounting Hardware	Snap-On- Snap-Fit
OEM Brand Name	Hubbell Premise Wiring
Style	RCA to F-Connector
Temperature Rating	Per TIA
Type	F-Type
UPC	662620854458

Dimensions

Display Size Standard Sized Product

Electrical Ratings

Connectivity	Female to Female
Contact Resistance	100 Ohm
Withstand Voltage	1000V RMS, 1414V DC

Logistics

Carton Quantity 25

Product Assets

[Literature - Hubbell SystemOne Recessed Fire-Rated Poke-Throughs: 4, 6, 8 and 10 inch](#)
[Literature - Integrating AV Systems](#)
[Sales Drawings - SFRFG - PDF](#)



A proud member of the Hubbell Family.

©2023 Hubbell Incorporated. All rights reserved.
PREM-SFRFGEI-SPEC-EN | REV 7/2023