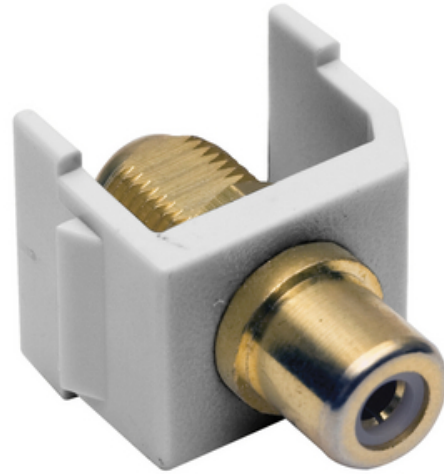




Hubbell Premise Wiring

# Connector, Snap-Fit, RCA to F-Coupler, White

By Hubbell Premise Wiring  
Catalog # [SFRFGW](#)



Connector, Snap-Fit, RCA to F-Coupler, White

## Application

Snap-Fit RCA to F-Connector

## General

Contact	Beryllium Copper
EU RoHS Indicator	Yes
Environmental Conditions	Indoor Dry Unless Protected By Additional Means
Item Type	iSTATION RCA and F-Keystone Connectors
Material - Mounting Hardware	Snap-On- Snap-Fit
OEM Brand Name	Hubbell Premise Wiring
Style	RCA to F-Connector
Temperature Rating	Per TIA
Type	F-Type
UPC	662620854427

## Dimensions

Display Size	Standard Sized Product
--------------	------------------------

## Electrical Ratings

Connectivity	Female to Female
Contact Resistance	100 Ohm
Withstand Voltage	1000V RMS, 1414V DC

## Logistics

Carton Quantity	25
-----------------	----

## Product Assets

- [Literature - Hubbell SystemOne Recessed Fire-Rated Poke-Throughs: 4, 6, 8 and 10 inch](#)
- [Literature - Healthcare Application Guide](#)
- [Literature - Integrating AV Systems](#)
- [Sales Drawings - SFRFG - PDF](#)



A proud member of the Hubbell Family.