

Floor Boxes

SystemOne Recessed 2 and 4 Gang Floor Box

Cover

HUBBELL

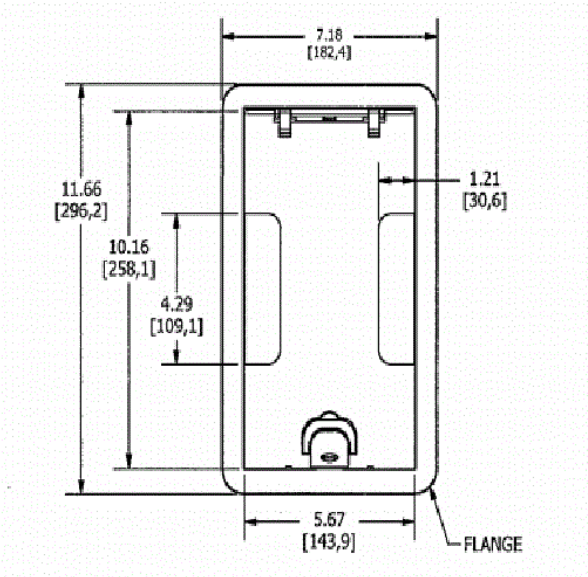
For Use In Concrete Floors

- Features
- 180 degree cover opening to lay flat and reduce tripping hazards
  - Two large cable egress doors
  - Die cast aluminum cover construction for enhanced durability
  - ADA Compliant

- Ordering Information
- Compatible with CFB2G25, CFB2G25CR, CFB2G30, CFB2G30CR, CFB4G25, CFB4G25CR, CFB4G30 and CFB4G30CR
  - Surface style typical applications: Carpet, VCT

|                    |                     |         |                   |
|--------------------|---------------------|---------|-------------------|
| Catalog Number     | UPC Number          | Style   | Finish            |
| 24GCCVRBK          | 783585446400        | Surface | Black Powder Coat |
| Dimensions         | Floor Finish Insert |         |                   |
| 7-3/8 x 11-5/8 in. | No                  |         |                   |

|                     |                                |
|---------------------|--------------------------------|
| Specifications      |                                |
| Cover Material      | Aluminum                       |
| Flange height       | 0.13 in.                       |
| Adjustment Range    | 0 - 1.0 inch                   |
| Load Rating         | 800 lbs. (w/ 2x safety factor) |
| Power Opening       | 1 in.                          |
| Low Voltage Opening | 2 in.                          |



Online Resources

[eCatalog](#)