

Floor Boxes
SystemOne Recessed 2 and 4 Gang Floor Box
Cover



For Use In Concrete Floors

Features

- 180 degree cover opening to lay flat and reduce tripping hazards
- Two large cable egress doors
- Die cast aluminum cover construction for enhanced durability
- Up to 1 in. of upward post pour adjustment
- ADA Compliant

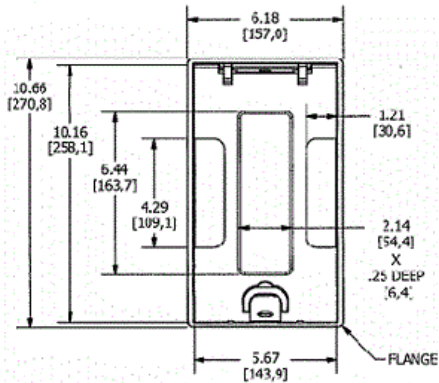
Ordering Information

- Compatible with CFB2G25, CFB2G25CR, CFB2G30, CFB2G30CR, CFB4G25, CFB4G25CR, CFB4G30 and CFB4G30CR
- Flush style typical applications: Tile, Finished Concrete, Terrazo

| | | | |
|-----------------------------------|--|----------------|--------------------------------|
| Catalog Number 24GTCVRLUC | UPC Number 783585527116 | Style Flush | Finish Aluminum Powder Coat |
| Dimensions 6-3/16 x 10-5/8 in. | Floor Finish Insert Yes - 2-1/8 x 6-3/8 in. | | |

Specifications

| | |
|---------------------|--------------------------------|
| Cover Material | Aluminum |
| Flange height | 0.0 in. |
| Adjustment Range | 0 - 1.0 inch |
| Load Rating | 800 lbs. (w/ 2x safety factor) |
| Power Opening | 1 in. |
| Low Voltage Opening | 2 in. |



Online Resources

eCatalog