

Cable
UTP Cables
Category 5e UTP Cable

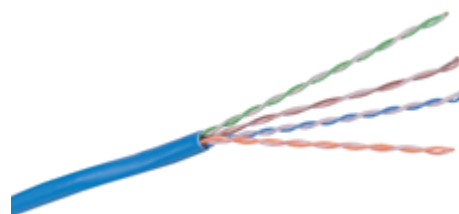
HUBBELL

Features

- Sweep Tested from 1-350 MHz
- Guaranteed Headroom Over TIA and ISO Category 5e
- Reverse Sequential Footage Marking
- Backward Compatible to Category 5 and 3

Ordering Information

| Description | Color | Catalog Number | UPC Number |
|---|-------|----------------|--------------|
| Category 5e, 4-Pair, UTP Cable, Plenum REELEX | Blue | C5ERPB | 662620201023 |



Listings

ANSI/TIA/EIA-568-B.2 Category 5e Component
 UL Listed and Tested
 NEC Article 800 Compliant
 UL Verified Performance

Specifications

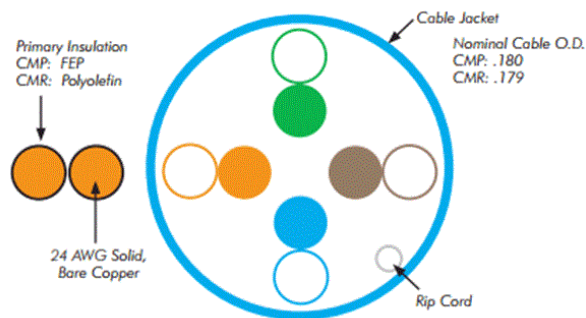
| | |
|--------------------|----------------------------|
| Wire | 24 AWG Bare Solid Copper |
| Primary Insulation | CMP: FEP |
| Primary Insulation | CMR: Polyolefin |
| Cabling | 4 Unshielded Twisted Pairs |
| Outer Jacket | Low Smoke PVC |
| Inner Jacket | PVC |

Performance

| | |
|---------------|--------------------|
| Verifications | IEEE 802.3af (PoE) |
|---------------|--------------------|

Applications

Ethernet: 10/100/1000BASE-T
 155 Mbps ATM
 4/16 Mbps Token Ring
 Analog and Digital VoIP



Accessories

| | |
|------------------------------------|------------------------------------|
| SPEEDGAIN Jacks, Category 5e | HXJ5EB |
| SPEEDGAIN Patch Panel, Category 5e | P5ExxU (xx=Ports) |
| SPEEDGAIN Patch Cords, Category 5e | PCX5EB* (*=Standard Length) |

| TRANSMISSION SPECIFICATIONS - Worst Case | | | | | | | | |
|---|---------------------|----------------|------------------|----------|------------|-------------|---------------|------------------|
| TIA/EIA-568-B.2 Category 5e Compliant; ISO/IEC 11801, 2nd ed. | | | | | | | | |
| Freq. (MHz) | Ins. loss (dB/100m) | NEXT loss (dB) | PSNEXT loss (dB) | ACR (dB) | PSACR (dB) | ELFEXT (dB) | PSELFEXT (dB) | Return loss (dB) |
| 1 | 2.1 | 65.5 | 62.5 | 63.5 | 60.5 | 64.0 | 61.0 | 20.2 |
| 4 | 4.2 | 56.5 | 53.5 | 52.4 | 50.1 | 52.0 | 49.0 | 23.2 |
| 8 | 5.9 | 52.0 | 49.0 | 46.2 | 43.2 | 45.9 | 42.9 | 24.7 |
| 10 | 6.6 | 50.5 | 47.5 | 44.0 | 41.0 | 44.0 | 41.0 | 25.2 |
| 16 | 8.3 | 47.4 | 44.4 | 39.2 | 36.2 | 39.9 | 36.9 | 25.2 |
| 31.25 | 11.8 | 43.1 | 40.1 | 31.3 | 28.4 | 34.1 | 31.1 | 23.8 |
| 62.5 | 17.1 | 38.6 | 35.6 | 21.6 | 18.6 | 28.1 | 25.1 | 21.7 |
| 100 | 22.1 | 35.5 | 32.5 | 13.5 | 10.5 | 24.0 | 21.0 | 20.3 |
| 200* | 32.1 | 31.4 | 29.1 | - | - | 18.1 | 15.1 | 18.2 |
| 300* | 40.9 | 28.3 | 25.3 | - | - | 14.5 | 11.5 | 17.0 |
| 350* | 48.7 | 27.8 | 25.1 | - | - | 13.8 | 10.7 | 15.9 |

* Frequencies beyond the TIA and ISO requirements are for information only.