

Cable
UTP Cables
Category 5e UTP Cable

HUBBELL

Features

- Sweep Tested from 1-350 MHz
- Guaranteed Headroom Over TIA and ISO Category 5e
- Reverse Sequential Footage Marking
- Backward Compatible to Category 5 and 3

Ordering Information

Description	Color	Catalog Number	UPC Number
Category 5e, 4-Pair, UTP Cable, Plenum REELEX	White	C5ERPW	662620201030

Listings

ANSI/TIA/EIA-568-B.2 Category 5e Component
 UL Listed and Tested
 NEC Article 800 Compliant
 UL Verified Performance

Specifications

Wire	24 AWG Bare Solid Copper
Primary Insulation	CMP: FEP
Primary Insulation	CMR: Polyolefin
Cabling	4 Unshielded Twisted Pairs
Outer Jacket	Low Smoke PVC
Inner Jacket	PVC

Performance

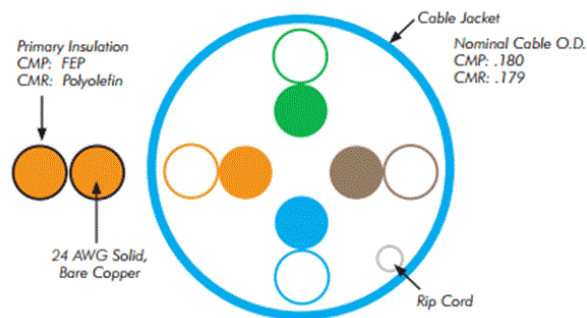
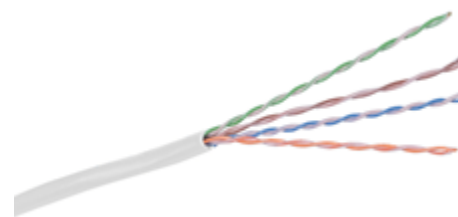
Verifications IEEE 802.3af (PoE)

Applications

Ethernet: 10/100/1000BASE-T
 155 Mbps ATM
 4/16 Mbps Token Ring
 Analog and Digital VoIP

Accessories

SPEEDGAIN Jacks, Category 5e	HXJ5EW
SPEEDGAIN Patch Panel, Category 5e	P5ExxU (xx=Ports)
SPEEDGAIN Patch Cords, Category 5e	PCX5Exx* (xx=Color) (*=Standard Length)



TRANSMISSION SPECIFICATIONS - Worst Case

TIA/EIA-568-B.2 Category 5e Compliant; ISO/IEC 11801, 2nd ed.

Freq. (MHz)	Ins. loss (dB/100m)	NEXT loss (dB)	PSNEXT loss (dB)	ACR (dB)	PSACR (dB)	ELFEXT (dB)	PSELFEXT (dB)	Return loss (dB)
1	2.1	65.5	62.5	63.5	60.5	64.0	61.0	20.2
4	4.2	56.5	53.5	52.4	50.1	52.0	49.0	23.2
8	5.9	52.0	49.0	46.2	43.2	45.9	42.9	24.7
10	6.6	50.5	47.5	44.0	41.0	44.0	41.0	25.2
16	8.3	47.4	44.4	39.2	36.2	39.9	36.9	25.2
31.25	11.8	43.1	40.1	31.3	28.4	34.1	31.1	23.8
62.5	17.1	38.6	35.6	21.6	18.6	28.1	25.1	21.7
100	22.1	35.5	32.5	13.5	10.5	24.0	21.0	20.3
200*	32.1	31.4	29.1	-	-	18.1	15.1	18.2
300*	40.9	28.3	25.3	-	-	14.5	11.5	17.0
350*	48.7	27.8	25.1	-	-	13.8	10.7	15.9

* Frequencies beyond the TIA and ISO requirements are for information only.

