

Cable
UTP Cables
NEXTSPEED® Category 6 UTP Cable

HUBBELL

Features

- Sweep Tested from 1-550 MHz
- Guaranteed Headroom Over TIA and ISO Category 6
- Reverse Sequential Numbering
- Backward Compatible to Category 5e, 5 and 3

Ordering Information

Description	Color	Catalog Number	UPC Number
NEXTSPEED® Category 6, 4-Pair, UTP Cable, Riser, Reelex	Orange	C6RROR	662620287966

Listings

ANSI/TIA/EIA-568-C.2 (Category 6 Component)
 UL Listed and Tested
 NEC Article 800 Compliant
 UL Verified Performance

Specifications

Wire	23 AWG Bare Solid Copper
Primary Insulation	CMP: FEP
Primary Insulation	CMR: Polyolefin
Cabling	4 Unshielded Twisted Pairs
Outer Jacket	Low Smoke PVC
Inner Jacket	PVC

Performance

Verifications IEEE 802.3af (PoE)

Applications

Data Centers: Multi Gigabit Between Devices
 PoE Applications
 Bandwidth Intense Processing

Accessories

NEXTSPEED Jacks, Category 6	HXJ6B
NEXTSPEED Patch Panel, Category 6	P6Exx (xx=Ports)
NEXTSPEED Patch Cords, Category 6	PCXB* (*=Standard Length)

TRANSMISSION SPECIFICATIONS - Worst Case

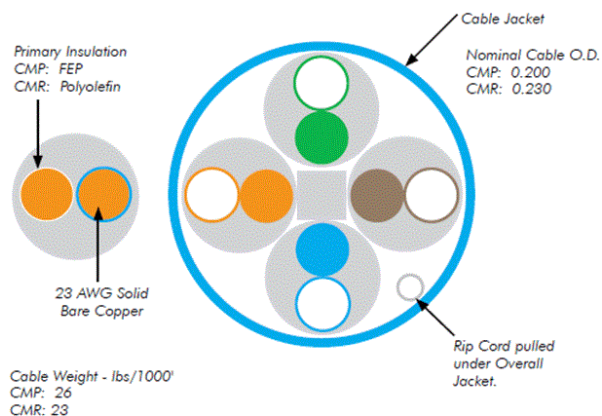
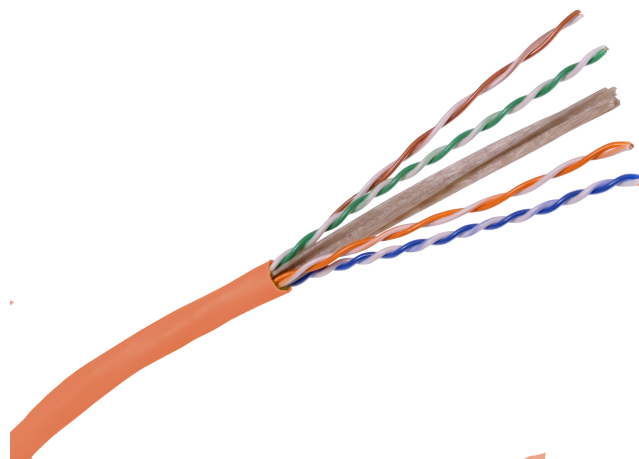
TIA/EIA-568-C.2 Category 6 Compliant;
 ISO/IEC 11801, 2nd ed. Category 6 Compliant

Freq. (MHz)	Ins. loss (dB/100m)	NEXT (dB/100m)	PSNEXT (dB/100m)	ACR (dB)	PSACR (dB)	ELFEXT (dB)	PSELFEXT (dB)	Return loss (dB)
1	2.0	77.5	75.4	75.4	73.4	71.0	68.0	20.2
4	3.7	68.4	66.4	64.6	62.6	59.0	56.0	23.2
8	5.3	63.9	61.9	58.6	56.6	52.9	49.9	24.7
10	5.9	62.5	60.4	56.4	54.4	51.0	48.0	25.2
16	7.5	60.0	57.3	51.7	49.7	46.9	43.9	25.2
31.25	10.6	55.1	53.1	44.3	42.3	41.1	38.1	23.8
62.5	15.3	50.7	48.6	35.1	33.1	35.1	32.1	21.7
100	19.7	47.4	45.4	25.6	25.6	31.0	28.0	20.3
200	28.9	42.9	40.9	13.9	11.9	25.0	22.0	18.2
250	32.7	41.4	39.4	8.6	6.5	23.0	20.0	17.5
350*	39.9	39.2	37.3	-	-	20.1	17.1	16.5
400*	42.9	39.5	36.4	-	-	19.0	15.9	15.8
500*	48.8	36.9	35.0	-	-	16.9	13.9	15.1

* Frequencies beyond the TIA and ISO requirements are for information only.

Hubbell Premise Wiring • Hubbell Incorporated (Delaware) • 40 Waterview Drive • Shelton, CT 06484 • Phone (800) 626-0005 • FAX (860) 535-5368

Printed in U.S.A. Specifications subject to change without notice.



Hubbell Premise Wiring