

Floor Boxes

**SystemOne ETERNAL™ Series Concrete Floorboxes**

**2-Gang Recessed**

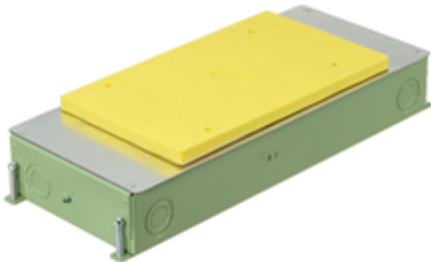
HUBBELL

**Features**

- 3.75" deep wiring chambers for large AV modules and feed-thru capacity
- Stamped steel construction, exterior coated with fusion bonded epoxy paint for on grade use, ships with Flush Installation Cover & 1/2" Prepour Cover
- Pre and post pour adjustment
- Rectangular cover, patented labor saving easy mount device plates

**Ordering Information**

Cover Style	Box Type	Catalog Number	UPC Number
Rectangular	On/ Above Grade	CFB2G25CRE	783585695174



**Listings**

cULus Listed  
UL 514A Listed

**Specifications**

Box Material	16 gauge galvanized steel
Box Finish	Green corrosion resistant epoxy paint
Top Mouning Plates	16 gauge galvanized steel
Flush Prepour Cover	16 gauge galvanized steel
1/2" Prepour Cover	Yellow Plastic
Device Chamber Grounding	6" Long #12 AWG Solid Copper Wire
Wiring Chamber Depth	3.75"
Wiring Chamber Volumes	(2) 47.5 IN³ [778 CM³]

**Performance**

**Height**

2.50" [63.5mm]

**Length**

16.27" [413.3mm]

**Trade Size Knock-Outs: Ends**

(2) ½", ¾", 1"

**Width**

6.62" [168.1mm]

**Accessories**

Rectangular pre-pour ½ in. extension caps (2 pack)	24GEXTENDCAP2PK
3-Cubes, Single Circuit	PWFBMP3R

**Online Resources**

Customer Sales Drawings  
eCatalog  
Installation Instructions