

Floor Boxes

SystemOne Recessed 2 Gang Floor Box

For Use In Concrete Floors



Features

- Designed for applications requiring up to 2 in. conduits (with use of CFBHUB2 purchased separately)
- Stamped steel construction, exterior coated with fusion bonded epoxy paint for on grade use
- Pre and post pour adjustment
- Patent pending, labor saving, easy mount device plates
- Round covers

Ordering Information

- Adjustable collar for up to 1/4 in. post pour adjustment
- 6 inch solid conductor ground pigtail in each gang

Catalog Number CFB2G30RCR	UPC Number 783585447179	Cover Series CFBS1R6xx / CFBS1R6FFxx	Box Type On Grade
Device Volume 35 cu. in.	Depth Behind Mounting Plate 2 1/2 in.	Min. Pour Depth 3 3/4 in.	

Specifications

Box Material	16 gauge galvanized steel
Access Cover Material (ordered separately)	Die cast aluminum

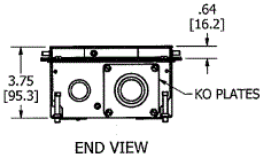
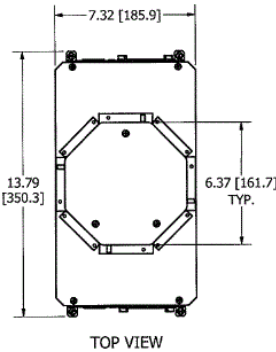
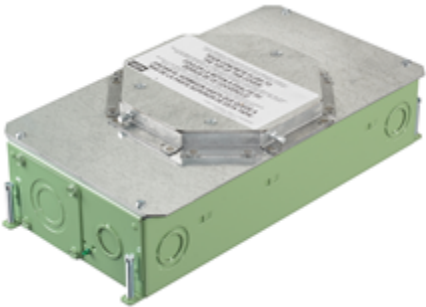
Required

Cover

Surface Style Rectangular Covers (for use with carpet, tile, VCT and other engineered floors) [Click here](#)

Accessories

2 in. threaded zinc hub	CFBHUB2
Replacement knock-out plate with epoxy coating	CFBKOPATECR
Replacement wire-way, used to pass wires from one compartment to the other	CFB2WW
Finished floor height adjustment ring - increase post pour adjustment 0 - 1/4 in.	CFB6RCVRR1
Finished floor height adjustment ring - increase post pour adjustment 1/4 - 1/2 in.	CFB6RCVRR2
Finished floor height adjustment ring - increase post pour adjustment 1/2 - 3/4 in.	CFB6RCVRR3



Online Resources

[eCatalog](#)

