

Floor Boxes

**SystemOne ETERNAL™ Series Concrete Floorboxes**

**4-Gang Recessed**

HUBBELL

Features

- Cast iron base for on grade use
- Threaded conduit entry hubs
- Ships with Flush Installation Cover & 1/2" Prepour Cover
- Pre and post pour adjustment
- Rectangular cover, patented labor saving easy mount device plates

Ordering Information

Cover Style	Box Type	Catalog Number	UPC Number
Rectangular	On/ Above Grade	CFB4G30CI	783585447261

Listings

cULus Listed  
UL 514A Listed

Specifications

Box Material	Cast Iron
Box Finish	Gray corrosion resistant epoxy paint
Top Mousing Plates	16 gauge galvanized steel
Flush Prepour Cover	16 gauge galvanized steel
1/2" Prepour Cover	Yellow Plastic
Device Chamber Grounding	6" Long #12 AWG Solid Copper Wire
Wiring Chamber Depth	2.71"
Wiring Chamber Volumes	(4) 30.0 IN³ [491.7 CM³]

Performance

Height

3.20"[81.3mm]

Length

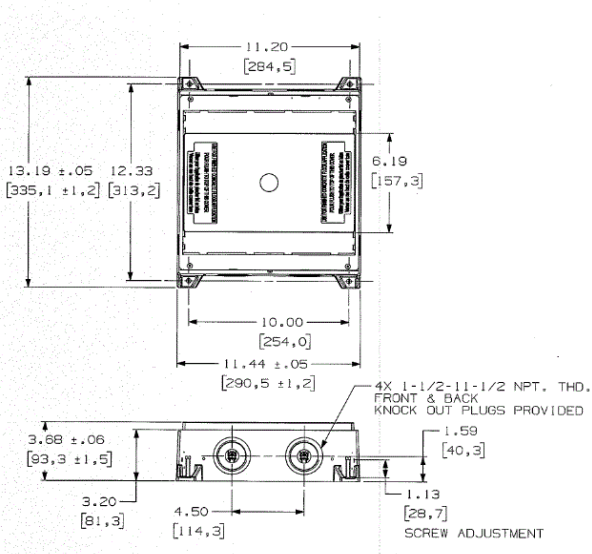
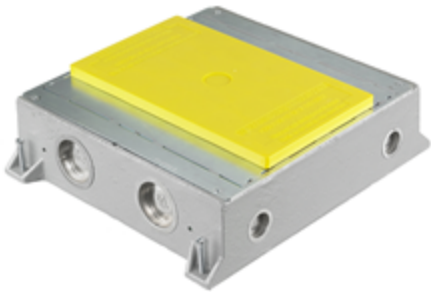
13.19" [335.1mm]

Threaded Hubs: Ends

(4) 1½" NPT Thread

Width

11.44" [290.5mm]



Accessories

Rectangular pre-pour ½ in. extension caps (2 pack)	24GEXTENDCAP2PK
3-Cubes, Single Circuit	PWFBMP3R

Online Resources

Customer Sales Drawings  
eCatalog  
Installation Instructions