

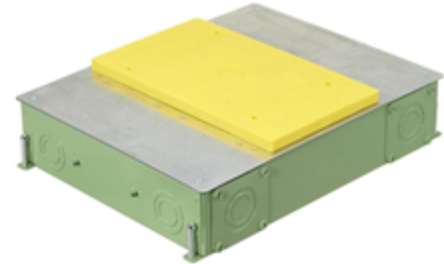
Floor Boxes

SystemOne ETERNAL™ Series Concrete Floorboxes 4-Gang Recessed

HUBBELL

Features

- 3.75" deep wiring chambers for large AV modules and feed-thru capacity
- External High Capacity Feed-Thru Hubs Sold Separately
- Stamped steel construction, exterior coated with fusion bonded epoxy paint for on grade use, ships with Flush Installation Cover & 1/2" Prepour Cover
- Pre and post pour adjustment
- Rectangular cover, patented labor saving easy mount device plates



Ordering Information

Cover Style	Box Type	Catalog Number	UPC Number
Rectangular	On/ Above Grade	CFB4G30CRE	783585695303

Listings

cULus Listed
UL 514A Listed

Specifications

Box Material	16 gauge galvanized steel
Box Finish	Green corrosion resistant epoxy paint
Top Mousing Plates	16 gauge galvanized steel
Concrete Cover	16 gauge galvanized steel
Device Chamber Grounding	6" Long #12 AWG Solid Copper Wire
Wiring Chamber Depth	3.75"
Wiring Chamber Volumes	(4) 51.0 IN ³ [835 CM ³]

Performance

Height

3.00" [76.2mm]

Length

14.57" [370.1mm]

Trade Size Knock-Outs: Ends

(4) 1/2", 3/4", 1", 1 1/4"

Width

11.33" [287.8mm]

Accessories

(2) 2"PVC field installed hubs, ships with (2) 1-1/2" reducer, (2) 1-1/4" reducers, and (2) 1" reducers/plugs	CFBHUB200PVC
(2) 1-1/4" PVC field installed hubs, ships with (2) 1" reducers, (2) 3/4" reducers, AND (2) 1/2" reducer/plugs	CFBHUB125PVC
2" threaded zinc hub	CFBHUB2
Rectangular pre-pour 1/2 in. extension caps (2 pack)	24GEXTENDCAP2PK
3-Cubes, Single Circuit	PWFBMP3R

Online Resources

Customer Sales Drawings
eCatalog
Installation Instructions



Hubbell Premise Wiring