

# Grounding & Bonding

## Bus Bar

### Wall Mounted

# HUBBELL

### Features

- Rack Bonding Bus bars offer a convenient and organized bonding surface for collecting stray electrical currents
- Mounting holes are predrilled or tapped for matching with lugs



### Ordering Information

Description	Style	UPC Number	Catalog Number
Bus Bar, 4 in. x 16 in. 8D, 8DB, Tin Plated	TMGB/PBB/MGB	662620310862	<b>HBBB14416HTP</b>

### Listings

c-UL-us Listed  
TIA-607 Compliant

### Specifications

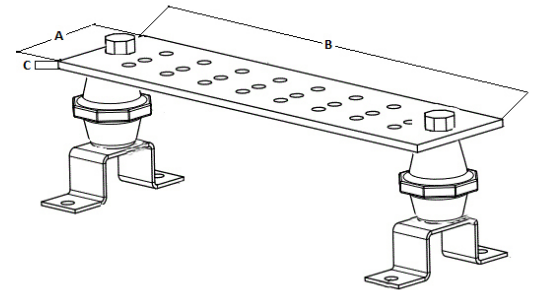
Material	Copper
Finish	Tin-Plated
Insulators	Included
Insulator Bracket	Stainless Steel
D-Lug Mount Quantity	8
DB-Lug Mount Quantity	8

### Accessories

12' Conductor	HGRKTD144D
20' Conductor	HGRKTX240D
D-Lugs (50pk)	HGBL06D
D-Lugs (1pk)	HGBL06D1

### Resources

Customer Use Drawing



### Dimensions in. (mm)

A	4" (102)
B	16" (406)
C	0.25" (6)