

Grounding & Bonding

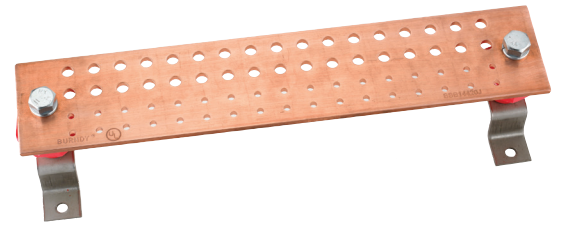
Bus Bar

Wall Mounted

HUBBELL

Features

- Rack Bonding Bus bars offer a convenient and organized bonding surface for collecting stray electrical currents
- Mounting holes are predrilled or tapped for matching with lugs

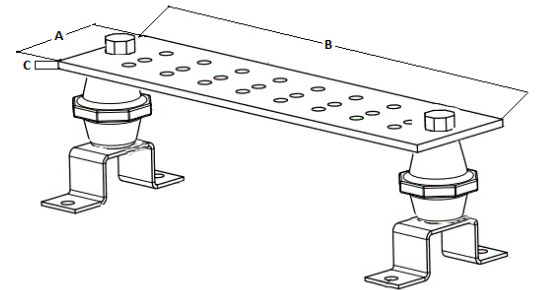


Ordering Information

| Description | Style | UPC Number | Catalog Number |
|---|--------------|--------------|----------------|
| Bus Bar, 4 in. x 20 in. 17D, 17DB, Tin Plated | TMGB/PBB/MGB | 662620310879 | HBBB14420JTP |

Listings

c-UL-us Listed
TIA-607 Compliant



Specifications

| | |
|-----------------------|-----------------|
| Material | Copper |
| Finish | Tin-Plated |
| Insulators | Included |
| Insulator Bracket | Stainless Steel |
| D-Lug Mount Quantity | 17 |
| DB-Lug Mount Quantity | 17 |

Accessories

| | |
|---------------|------------|
| 12' Conductor | HGRKTD144D |
| 20' Conductor | HGRKTX240D |
| D-Lugs (50pk) | HGBL06D |
| D-Lugs (1pk) | HGBL06D1 |

Dimensions in. (mm)

| | |
|---|-----------|
| A | 4" (102) |
| B | 20" (508) |
| C | 0.25" (6) |

Resources

Customer Use Drawing