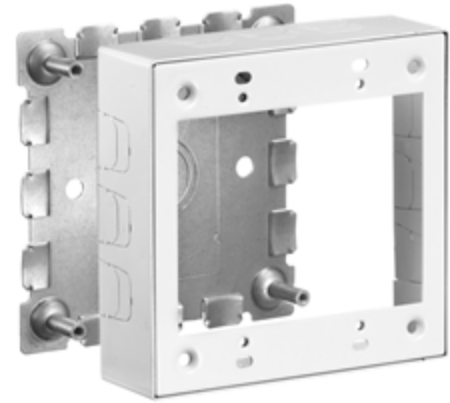


Raceway Metal Raceway 2-Gang Shallow Box

HUBBELL

Features

- For use with HBL500, HBL700 and HBL750 Series Raceway
- Hubbell Handi-Screw® eases installation by eliminating difficult to install long screws
- Rounded corners with no sharp edges
- One seam construction provides a “clean” look
- Box design allows standard wallplates to be mounted flush with virtually no perimeter profile exposed



Ordering Information

Description	Color	UPC Number	Catalog Number
2-Gang Shallow Box	White	783585423494	HBL57472WA

Listings

UL Listed
CSA Certified

Specifications

Height	4.54"
Width	4.64"
Length	1.38"

Online Resources

eCatalog