

Raceway  
Metal Raceway  
HBL6750 Series Tee Fitting, Divided

# HUBBELL

### Features

- For branches at right angles.
- Full capacity 1¼ in. bend radius tee fitting.
- HBL6751A couplings included

### Ordering Information

| Description          | Material | UPC Number   | Catalog Number |
|----------------------|----------|--------------|----------------|
| Tee Fitting, Divided | Steel    | 783585217703 | HBL6715DFOGY   |

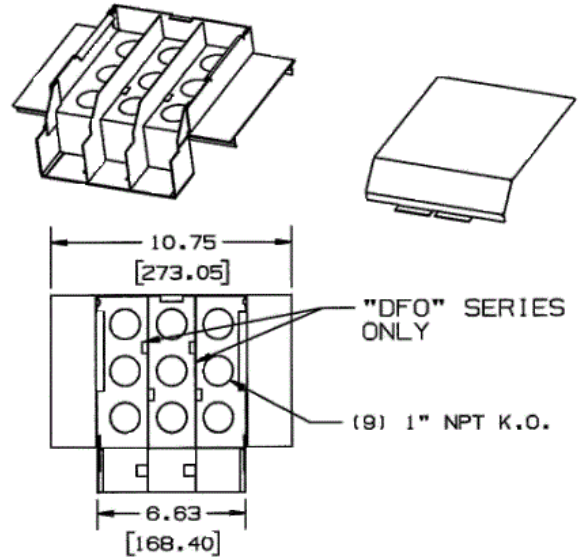
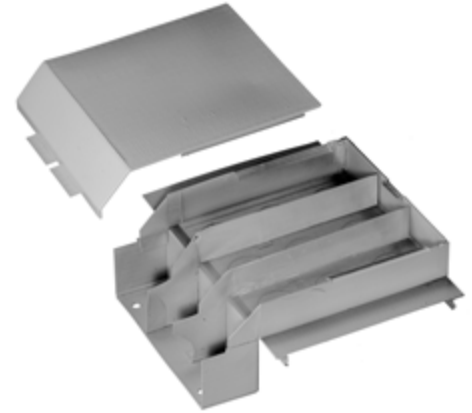
**Color**  
Gray

### Listings

UL Listed  
CSA Certified

### Specifications

|        |       |
|--------|-------|
| Height | 3.56" |
| Width  | 6.63" |
| Length | 7.92" |



### Online Resources

Customer Use Drawing  
eCatalog  
Installation Instructions