

# Data & Communications

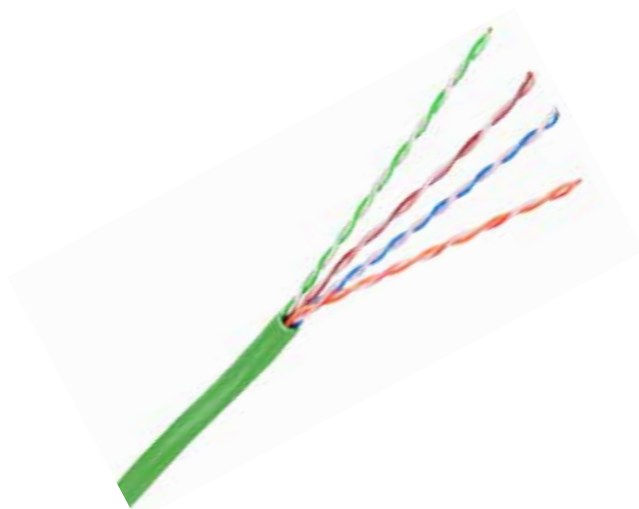
## Copper Cable

### NEXTSPEED® LINK Category 6 UTP Cable

# HUBBELL®

#### Features

- Guaranteed to meet all transmission and mechanical performance requirements specified in the TIA/EIA-568.2-D
- Sweep tested from 1 to 550 MHz
- Balanced and optimized with Hubbell connectivity to maximize performance
- Small O.D. to maximize conduit/pathway capacity and air flow



#### Ordering Information

Description	Color	Delivery	UPC Number	Catalog Number
NEXTSPEED LINK Category 6 UTP Cable, Plenum	Green	1,000 ft. REELEX Box	662620659640	<b>HC6RPEGN</b>

#### Listings

ANSI/TIA 568.2-D  
ISO 11802 Ed. 2 (Class E)  
NFPA 262 (CMP); UL 1666 (CMR)  
NEC Article 800 compliant (NFPA 70)

#### Specifications

Conductor	23 AWG solid annealed copper
Conductor Insulation	CMP: FEP, CMR: Polyolefin
Cabling	Four unshielded twisted pairs in overall jacket.
Jacket	CMP: Low-Smoke PVC; CMR: PVC
NVP	CMP: 73%; CMR: 70%
Rated Temperature	CMP 90°C; CMR 75°C

#### Performance

IEEE 802.3 10/100/1000BASE-T  
IEEE 802.3 10GbE when qualified per TSB-155  
IEEE 802.3af (PoE), IEEE 802.3at (PoE+)  
IEEE 802.3bt (4PPoE Type 3 and 4)

#### Accessories

NEXTSPEED Category 6 Jacks	<b>HXJ6B</b>
NEXTSPEED Category 6 Patch Panels	<b>HP648</b>
NEXTSPEED Category 6 Patch Cords	<b>HC6B03</b>

#### Online Resources

eCatalog