

Data & Communications

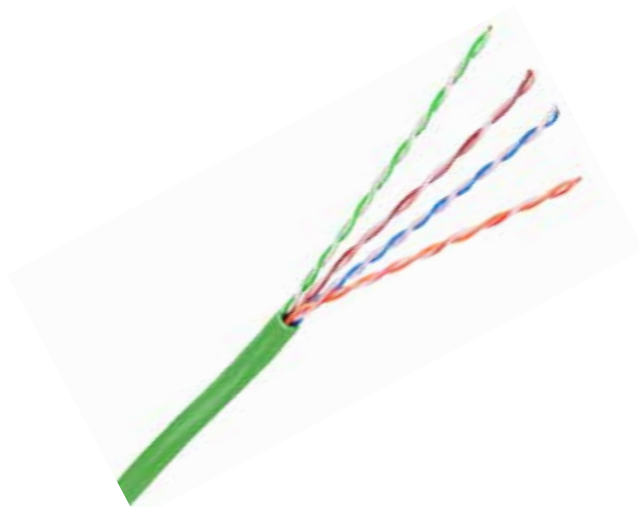
Copper Cable

NEXTSPEED® LINK Category 6 UTP Cable

HUBBELL®

Features

- Guaranteed to meet all transmission and mechanical performance requirements specified in the TIA/EIA-568.2-D
- Sweep tested from 1 to 550 MHz
- Balanced and optimized with Hubbell connectivity to maximize performance
- Small O.D. to maximize conduit/pathway capacity and air flow



Ordering Information

Description	Color	Delivery	UPC Number	Catalog Number
NEXTSPEED LINK Category 6 UTP Cable, Riser	Green	1,000 ft. REELEX Box	662620659541	HC6RREGN

Listings

ANSI/TIA 568.2-D
ISO 11802 Ed. 2 (Class E)
NFPA 262 (CMP); UL 1666 (CMR)
NEC Article 800 compliant (NFPA 70)

Specifications

Conductor	23 AWG solid annealed copper
Conductor Insulation	CMP: FEP, CMR: Polyolefin
Cabling	Four unshielded twisted pairs in overall jacket.
Jacket	CMP: Low-Smoke PVC; CMR: PVC
NVP	CMP: 73%; CMR: 70%
Rated Temperature	CMP 90°C; CMR 75°C

Performance

IEEE 802.3 10/100/1000BASE-T
IEEE 802.3 10GbE when qualified per TSB-155
IEEE 802.3af (PoE), IEEE 802.3at (PoE+)
IEEE 802.3bt (4PPoE Type 3 and 4)

Accessories

NEXTSPEED Category 6 Jacks	HXJ6B
NEXTSPEED Category 6 Patch Panels	HP648
NEXTSPEED Category 6 Patch Cords	HC6B03

Online Resources

eCatalog