

Grounding & Bonding Compression Device Compression Lug

HUBBELL

Features

- Long barrel compression lugs are the best solution for building a low-resistance bond
- HPW lugs are die index traceable when using a properly sized die for compression
- Lugs are tin plated and have an inspection window to ensure that the conductor is fully inserted



Ordering Information

| Gauge | Mounting | Catalog Number | UPC Number |
|-----------|--------------------|----------------|--------------|
| 500 kcmil | 3/8" ID, 1" Spaced | HGBL500DB | 662620326870 |

Listings

UL
TIA-607 Compliant

Specifications

| | |
|-------------------|------------|
| Material | Copper |
| Surface Finish | Tin Plated |
| Barrel | Long |
| Inspection Window | Yes |

Characteristics

Voltage Rating

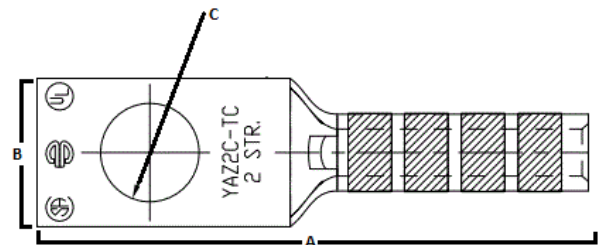
| | |
|---------------------|------------------------|
| 20 600V to 35 kV | UL Listed Die Index |
|---------------------|------------------------|

Accessories

| | |
|-------------------|-------------|
| Die | HU34RT |
| Die | HW34VT |
| 6 Ton Power Tool | HPAT600LI |
| 12 Ton Power Tool | HPAT750LI |
| 12' Conductor | HGRKTDA144D |

Online Resources

Brochure
Customer Use Drawing
eCatalog



Dimensions- inches (mm)

| | |
|---|------------|
| A | 4.9" (123) |
| B | 1.6" (39) |
| C | 0.4" (10) |
| D | 1" (25) |