

# Grounding & Bonding Compression Device Heavy Duty Compression Lug

# HUBBELL

## Features

- HPW lugs are die index traceable when using a properly sized die for compression
- Heavy duty lugs are filled with antioxidant to ensure proper bond

## Ordering Information

| Gauge | Mounting               | Catalog Number | UPC Number   |
|-------|------------------------|----------------|--------------|
| 2/0   | 1/2" ID, 1 3/4" Spaced | HYGHA26        | 662620331492 |

## Listings

UL  
TIA-607 Compliant

## Specifications

|                   |            |
|-------------------|------------|
| Material          | Copper     |
| Surface Finish    | Copper     |
| Barrel            | Heavy Duty |
| Inspection Window | Yes        |
| Antioxidant       | Filled     |

## Characteristics

### Die Index

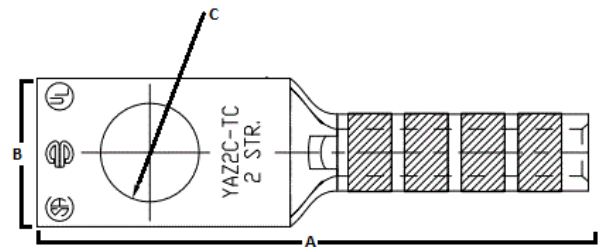
15 UL Listed

## Accessories

|                   |            |
|-------------------|------------|
| Die               | HU28RT     |
| 6 Ton Power Tool  | HPAT600LI  |
| 12 Ton Power Tool | HPAT750LI  |
| 12' Conductor     | HGRKTD144D |

## Online Resources

Brochure  
Customer Use Drawing  
eCatalog



## Dimensions- inches (mm)

|   |            |
|---|------------|
| A | 4.4" (112) |
| B | 1" (25)    |
| C | 1.75" (44) |
| D | 0.6" (15)  |