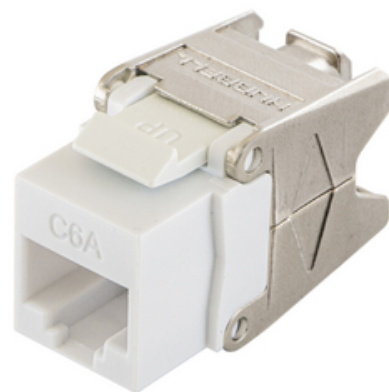


HUBBELL Premise Wiring

Category 6A Jack with Cobra-Lock™ Termination

By Hubbell Premise Wiring
Catalog # [HJU6AW24](#)

NEXTSPEED Ascent Category 6A Jack with Cobra-Lock
Termination.



Features

- Third Party Verified Category 6A Component
- Cobra-Lock Termination Reduces Termination Time by Over 75%
- Wires Secured Under Constant Compression
- Easily Re-Terminate
- Qualified to 150% of 802.3bt PoE Current Level
- Composant de catégorie 6A vérifié par un tiers
- la terminaison Cobra-Lock réduit le temps de terminaison de plus de 75 %
- les fils sont sécurisés sous une compression constante
- se reconnectent facilement
- qualifié à 150 % du niveau de courant PoE 802.3bt

General

Application	
Catalog Number	HJU6AW24
Color	
Construction Material - Main Contact	Thermoplastic and Diecast Zinc IDC: Phosphor Bronze with 100 Micro-Inch Tin Over Plating
Contact Point Material	Copper Alloy with Gold Over Plating
EU RoHS Indicator	Yes
Environmental Conditions	
Item Type	Modular Jack with Cobra-Lock
Material - Housing	High-impact thermoplastic (UL 94V-0) and Diecast Zinc
Mounting Type	
Operating Cycles	750+ Plug & 25 Re-Termination Cycles
Performance	TIA Cat 6A Component, Third Party Verified
Series	Cat 6A UTP
Size	0.87 (22) x 0.67 (17) x 1.39 (35)
Style	RJ-45 Jack
Temperature Rating	Max Continu- 75° C, Minimum- -40° C Sans impact
Type	
UPC	662620663562

Dimensions

Dimensions	0.87 (22) x 0.67 (17) x 1.39 (35)
Display Size	Standard Sized Product

Electrical Ratings

Connectivity	RJ45 Jack to Cobra-Lock
Withstand Voltage	1,000 Vac @ 60 Hz

Certifications And Compliance

Industry Standard(s)	ANSI/TIA/EIA-568 Category 6A component UL 1863 - Communications-Circuit Accessory IEC60512-99-002 POE Disconnection Endurance UL 2043 - Suitable for Air-Handling Spaces RoHS Compliant
----------------------	---

Logistics

Carton Quantity	15
Number of Pieces in Package	24
Pallet Quantity	825

Product Assets

[Brochures - DATA CENTER INFRASTRUCTURE SOLUTIONS](#)
[Catalog Page - PREM A4 CatalogPage](#)
[Catalog Page - PREM B3 CatalogPage](#)
[Catalogs - Premise Wiring Catalog](#)
[Literature - HDPJ High Density Jack Panels](#)
[Sales Drawings - HWS14889C_ASSY_JACK_HJU6A\[1\]](#)



A Hubbell brand

©2024 Hubbell Incorporated. All rights reserved
PREM_CA-HJU6AW24-SPEC-EN | REV 6/2024