

HUBBELL Premise Wiring

Category 5e netSELECT™ Jack

By Hubbell Premise Wiring
Catalog # NSJ5EGY24

NetSELECT™ Category 5e modular jacks meet all TIA channel parameters and support applications up to 2.5GBASE-T. The innovative angled QuickLace™ termination towers provide ample room for lacing, accelerating the termination.

Application

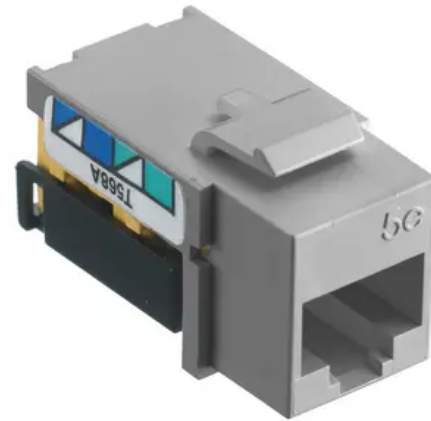
Up to 2.5GBASE-T, 802.3bt POE

Performance

TIA Cat 5e Component

General

Catalog Number	NSJ5EGY24
Construction Material - Main Contact	Thermoplastic IDC: Phosphor Bronze with 100 Micro-Inch Tin Over Plating
Contact Point Material	Beryllium Copper with Gold Over Plating
EU RoHS Indicator	Yes
Environmental Conditions	Indoor Dry Unless Protected By Additional Means
Item Type	Modular Jack
Material - Housing	High-impact thermoplastic (UL 94V-0)
Material - Mounting Hardware	Screw Mounting
Mounting Type	Snap-fit
Operating Cycles	750+ Plug
Series	Cat 5e UTP
Size	0.86 (22) x 0.67 (17) x 1.29 (33)
Specifications	<ul style="list-style-type: none">Housing - High impact thermoplastic (UL 94 V-0)IDC Contact - Phosphor bronze with 100 micro-inch tin over nickel under platingNose Contact - Beryllium copper with precious metal plating with nickel under-plating
Style	RJ-45 Jack
Sub Brand	Copper Work Area



Temperature Rating

Max Continuous- 75° C,
Minimum- -40° C Without
Impact

Type
UPC

Modular Jack
883778507168

Dimensions

Display Size

Standard Sized Product

Electrical Ratings

Connectivity
Contact Resistance
Insertion Loss
Withstand Voltage

RJ45 Jack to IDC Punch Down
Per TIA
Per TIA
1,000 Vac @ 60 Hz

Certifications And Compliance

Industry Standard(s)

- ANSI/TIA/EIA-568 Category 5e
- UL 1863 - Communications-Circuit Accessory
- IEC60512-99-002 POE Disconnection Endurance
- UL 2043 - Suitable for Air-Handling Spaces
- RoHS Compliant

Logistics

Carton Quantity 4
Number of Pieces in Package 24

Product Assets

[Catalog Page - PREM V10 CatalogPage](#)
[Catalog Page - PREM S10 CatalogPage](#)
[Catalogs - Premise Wiring Catalog](#)
[Specifications - NSJ5EGY24 Specification Sheet French](#)