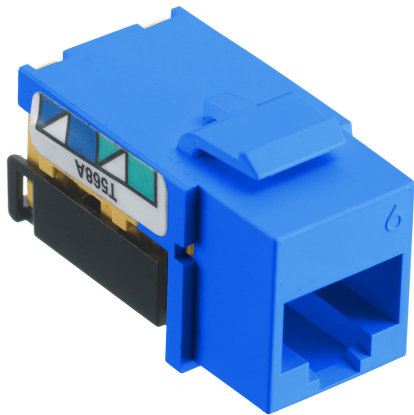


Category 6 netSELECT™ Series Jack

By Hubbell Premise Wiring
Catalog # [NSJ6B](#)

Category 6 netSELECT™ Jack



Features

- Easy To Terminate Angled Wiring Towers
- Exceeds TIA Category 6 Standards

Application

Up to 5GBASE-T, 802.3bt POE

Performance

TIA Cat 6 Component

Specifications

Environmental Conditions	Indoor Dry Unless Protected By Additional Means
EU RoHS Indicator	Yes
Standards - RoHS Compliance Status	CM
Industry Standard(s)	<ul style="list-style-type: none">• ANSI/TIA/EIA-568 Category 6• UL 1863 - Communications-Circuit Accessory• IEC60512-99-002 POE Disconnection Endurance• UL 2043 - Suitable for Air-Handling Spaces• RoHS Compliant

Conductor

Contact	IDC: Phosphor Bronze with 100 Micro-Inch Tin Over Plating
---------	---

Current

Withstand Voltage	1,000 Vac @ 60 Hz
Connectivity	RJ45 Jack to IDC Punch Down
Contact Resistance	Per TIA
Insertion Loss	Per TIA

Dimensions

Display Size	Standard Sized Product
Size	0.86 (22) x 0.67 (17) x 1.29 (33)

General

Series	netSELECT™ Series
Style	RJ-45 Jack
Color	Blue
Construction Material - Main Item Type	Thermoplastic Modular Jack
Material - Mounting Hardware Type	Screw Mounting Modular Jack
Contact Point Material	Beryllium Copper with Gold Over Plating

Specifications	<ul style="list-style-type: none">• Housing - High impact thermoplastic (UL 94 V-0)• IDC Contact - Phosphor bronze with 100 micro-inch tin over nickel under plating• Nose Contact - Beryllium copper with precious metal plating with nickel under-plating
Material - Housing	High-impact thermoplastic (UL 94V-0)
UPC	883778500169
Mounting Type	Snap-fit

Logistics

Number of Pieces in Package	1
Carton Quantity	25
Pallet Quantity	9600

Operational

Temperature Rating	Max Continuous- 75° C, Minimum- -40° C Without Impact
Operating Cycles	750+ Plug

Product Assets

[Catalog \[English\]](#)
[Catalog Page \[English\]](#)
[Catalog Page \[English\]](#)