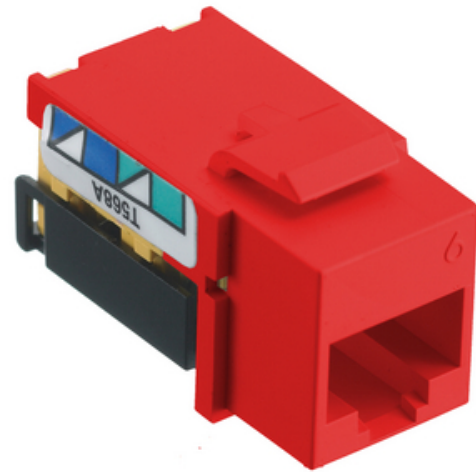




## Category 6 netSELECT™ Jack

By Hubbell Premise Wiring  
Catalog Number [NSJ6R](#)

NetSELECT™ Category 6 modular jacks meet all TIA channel parameters and support applications up to 5GBASE-T. The innovative angled QuickLace™ termination towers provide ample room for lacing, accelerating the termination.



### Features

- Easy To Terminate Angled Wiring Towers
- Exceeds TIA Category 6 Standards

### Application

Up to 5GBASE-T, 802.3bt POE

### General

Color	Red
Construction Material - Main Contact	Thermoplastic IDC: Phosphor Bronze with 100 Micro-Inch Tin Over Plating
Contact Point Material	Beryllium Copper with Gold Over Plating
EU RoHS Indicator	Yes
Environmental Conditions	Indoor Dry Unless Protected By Additional Means
Item Type	Modular Jack
Material - Housing	High-impact thermoplastic (UL 94V-0)
Material - Mounting Hardware	Screw Mounting
Mounting Type	Snap-fit
Operating Cycles	750+ Plug
Performance	TIA Cat 6 Component
Series	Cat 6 UTP
Size	0.86 (22) x 0.67 (17) x 1.29 (33)
Style	RJ-45 Jack
Temperature Rating	Max Continuous- 75° C, Minimum- -40° C Without Impact
Type	Modular Jack
UPC	883778503078

### Dimensions

Display Size Standard Sized Product

### Electrical Ratings

Connectivity	RJ45 Jack to IDC Punch Down
Contact Resistance	Per TIA
Insertion Loss	Per TIA
Withstand Voltage	1,000 Vac @ 60 Hz

### Certifications and Compliance

Industry Standard(s)	<ul style="list-style-type: none"><li>• ANSI/TIA/EIA-568 Category 6</li><li>• UL 1863 - Communications-Circuit Accessory</li><li>• IEC60512-99-002 POE Disconnection Endurance</li><li>• UL 2043 - Suitable for Air-Handling Spaces</li><li>• RoHS Compliant</li></ul>
----------------------	--

### Logistics

Carton Quantity	25
Number of Pieces in Package	1

### Product Assets

[Catalog Page](#) - [Premise Catalog Page V-10](#)



A proud member of the Hubbell Family.

©2023 Hubbell Incorporated. All rights reserved.  
PREM\_CA-NSJ6R-SPEC-EN | REV 5/2023