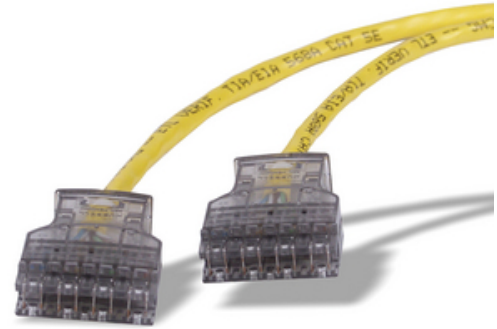




Patch Cord, Cat 5e, 110/110, Yellow, 7' Length

By Hubbell Premise Wiring
Catalog Number [PC110C5EL7](#)

Patch Cord, Cat 5e, 110/110, Yellow, 7' Length.



Features

- Plug Housing Includes Built-In Polarization to Ensure Proper Mating Connection to Connecting Blocks
- Angled Conductor Towers Separate Paired Conductors and makes Pair Splitting and Conductor Lacing Simple
- Cable Ties Secure Cable to Cover for Easy Termination and Strain Relief
- Clear Gray or Yellow Keeps Conductors Visible During and After Termination

General

Attenuation	.1dB
Boot Type	Polycarbonate
EU RoHS Indicator	Yes
Item Type	SPEEDGAIN 110 Connecting Block System
Material - Insulation	Flame Redardant PVC
Material - Jacket	Flame Redardant PVC
Performance	Electrical - Terminates 24 to 26 AWG solid or 7-strand twisted-pair cable -
Plug Type	110 Punch Down
Series	Cat 5E
Temperature Rating	Per TIA
UPC	662620835990

Dimensions

Outside Diameter	0.218
------------------	-------

Electrical Ratings

Voltage Rating	600V AC kV
----------------	------------

Conductor Related

Conductor Stranding	Stranded
Conductor Type	Copper
Number Of Conductors	8-Conductor
Wire Size	#26-22 AWG

Certifications and Compliance

Industry Standard(s)	Exceeds TIA/EIA-568-C.2-1 Category 6 ConNECting Hardware Specifications
----------------------	---

Logistics

Carton Quantity	20
-----------------	----



A proud member of the Hubbell Family.

©2023 Hubbell Incorporated. All rights reserved.
PREM_CA-PC110C5EL7-SPEC-EN | REV 5/2023