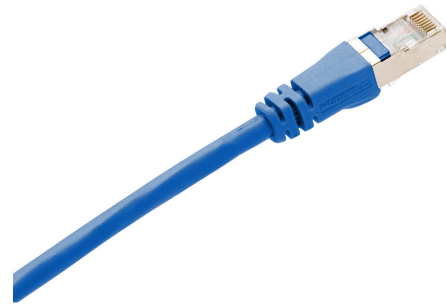


# HUBBELL Premise Wiring

## Patch Cord, 10Gig, PC6A, Blue, 7' Length

By Hubbell Premise Wiring  
Catalog # [PC6AB07](#)

Patch Cord, 10Gig, PC6A, Blue, 7' Length



### Features

- 10GbE Application Assurance
- Maximum Bandwidth Beyond 625MHz
- Component Compliant ANEXT Performance
- Qualified to 150% of 802.3bt PoE Current Level

### Specifications

EU RoHS Indicator	Yes
Industry Standard(s)	<ul style="list-style-type: none"><li>• ANSI/TIA/EIA-568-C.2 Category 6A Component</li><li>• ISO 11801/60603-7-41 Category 6A Component</li></ul>

### Conductor

Wire Size	#24 AWG
Number Of Conductors	8-Conductor
Conductor Type	Copper
Conductor Stranding	Stranded

### Current

Voltage Rating	300V AC kV
----------------	------------

### Dimensions

Outside Diameter	0.218
Length	7 ft

### General

Plug Type	RJ45
Color	Black
Type	Shielded
Material - Jacket	Flame Redardant PVC
Material - Insulation	Flame Redardant PVC
Specifications	<ul style="list-style-type: none"><li>• Conductor - 26AWG FTP</li><li>• Contact Plating - 50 micro-inch Gold with 100 micro-inch under plating</li><li>• Jacket - Flame-Retardant PVC-CM Rated</li><li>• Plug Body - Polycarbonate UL 94V-0</li><li>• Plug Boot - PVC</li></ul>
UPC	662620204017

### Logistics

Carton Quantity	100
-----------------	-----

### Operational

Temperature Rating	Per TIA
--------------------	---------

### Product Assets

- [Catalog \[English\]](#)
- [Catalog Page \[English\]](#)
- [Catalog Page \[English\]](#)